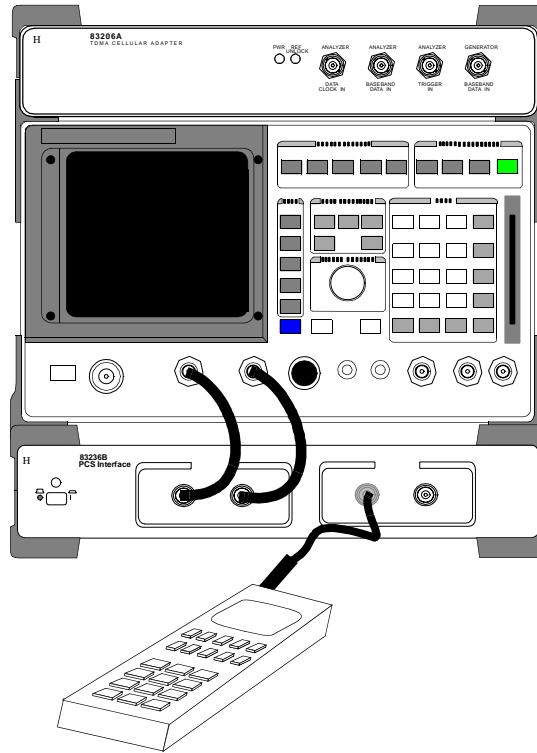


# TDMA Mobile Test Application Guide

## Manual and Automated IS-137 Mobile Testing with the HP 8920B Option 801 Test System



**Manufacturing Part Number: 08920-90240**

© Copyright Hewlett-Packard 1999

Printed in U.S.A October 1999

Revision B

---

## **Notice**

Information contained in this document is subject to change without notice.

All Rights Reserved. Reproduction, adaptation, or translation without prior written permission is prohibited, except as allowed under the copyright laws.

This material may be reproduced by or for the U.S. Government pursuant to the Copyright License under the clause at DFARS 52.227-7013 (APR 1988).

Hewlett-Packard Company  
Education Tools R&D Department  
24001 E. Mission  
Liberty Lake, WA 99019-9599  
U.S.A.

---

## **Manufacturer's Declaration**

This statement is provided to comply with the requirements of the German Sound Emission Directive, from 18 January 1991.

This product has a sound pressure emission (at the operator position) < 70 dB(A).

- Sound Pressure  $L_p < 70$  dB(A).
- At Operator Position.
- Normal Operation.
- According to ISO 7779:1988/EN 27779:1991 (Type Test).

### **Herstellerbescheinigung**

Diese Information steht im Zusammenhang mit den Anforderungen der Maschinenlärminformationsverordnung vom 18 Januar 1991.

- Schalldruckpegel  $L_p < 70$  dB(A).
- Am Arbeitsplatz.
- Normaler Betrieb.
- Nach ISO 7779:1988/EN 27779:1991 (Typprüfung).

---

# Safety Considerations

## GENERAL

This product and related documentation must be reviewed for familiarization with safety markings and instructions before operation.

This product has been designed and tested in accordance with IEC Publication 1010, "Safety Requirements for Electronic Measuring Apparatus," and has been supplied in a safe condition. This instruction documentation contains information and warnings which must be followed by the user to ensure safe operation and to maintain the product in a safe condition.

## SAFETY EARTH GROUND

A uninterruptible safety earth ground must be provided from the main power source to the product input wiring terminals, power cord, or supplied power cord set.

## CHASSIS GROUND TERMINAL

To prevent a potential shock hazard, always connect the rear-panel chassis ground terminal to earth ground when operating this instrument from a dc power source.

## SAFETY SYMBOLS



Indicates instrument damage can occur if indicated operating limits are exceeded. Refer to the instructions in this guide.



Indicates hazardous voltages.



Indicates earth (ground) terminal

---

**WARNING**    **A WARNING note denotes a hazard. It calls attention to a procedure, practice, or the like, which, if not correctly performed or adhered to, could result in personal injury. Do not proceed beyond a WARNING sign until the indicated conditions are fully understood and met.**

---

---

**CAUTION**    A CAUTION note denotes a hazard. It calls attention to an operation procedure, practice, or the like, which, if not correctly performed or adhered to, could result in damage to or destruction of part or all of the product. Do not proceed beyond an CAUTION note until the indicated conditions are fully understood and met.

---

---

## Safety Considerations for this Instrument

---

**WARNING** This product is a Safety Class I instrument (provided with a protective earthing ground incorporated in the power cord). The mains plug shall only be inserted in a socket outlet provided with a protective earth contact. Any interruption of the protective conductor inside or outside of the product is likely to make the product dangerous. Intentional interruption is prohibited.

Whenever it is likely that the protection has been impaired, the instrument must be made inoperative and be secured against any unintended operation.

If this instrument is to be energized via an autotransformer (for voltage reduction), make sure the common terminal is connected to the earth terminal of the power source.

If this product is not used as specified, the protection provided by the equipment could be impaired. This product must be used in a normal condition (in which all means for protection are intact) only.

No operator serviceable parts in this product. Refer servicing to qualified personnel. To prevent electrical shock, do not remove covers.

Servicing instructions are for use by qualified personnel only. To avoid electrical shock, do not perform any servicing unless you are qualified to do so.

The opening of covers or removal of parts is likely to expose dangerous voltages. Disconnect the product from all voltage sources while it is being opened.

Adjustments described in the manual are performed with power supplied to the instrument while protective covers are removed. Energy available at many points may, if contacted, result in personal injury.

The power cord is connected to internal capacitors that may remain live for 5 seconds after disconnecting the plug from its power supply.

For Continued protection against fire hazard, replace the line fuse(s) only with 250 V fuse(s) or the same current rating and type (for example, normal blow or time delay). Do not use repaired fuses or short circuited fuseholders.

---

---

**CAUTION** Always use the three-prong ac power cord supplied with this product. Failure to ensure adequate earth grounding by not using this cord may cause product damage.

This product is designed for use in Installation Category II and Pollution Degree 2 per IEC 1010 and IEC 664 respectively. For indoor use only.

This product has autoranging line voltage input, be sure the supply voltage is within the specified range.

Ventilation Requirements: When installing the product in a cabinet, the convection into and out of the product must not be restricted. The ambient temperature (outside the cabinet) must be less than the maximum operating temperature of the product by 4° C for every 100 watts dissipated in the cabinet. If the total power dissipated in the cabinet is greater than 800 watts, then forced convection must be used.

---

## **Product Markings**

CE - the CE mark is a registered trademark of the European Community. A CE mark accompanied by a year indicated the year the design was proven.

CSA - the CSA mark is a registered trademark of the Canadian Standards Association.

---

# Hewlett-Packard Warranty Statement for Commercial Products

## HP 8920B Option 801

### Duration of Warranty: One Year

1. HP warrants HP hardware, accessories and supplies against defects in materials and workmanship for the period specified above. If HP receives notice of such defects during the warranty period, HP will, at its option, either repair or replace products which prove to be defective. Replacement products may be either new or like-new.
2. HP warrants that HP software will not fail to execute its programming instructions, for the period specified above, due to defects in material and workmanship when properly installed and used. If HP receives notice of such defects during the warranty period, HP will replace software media which does not execute its programming instructions due to such defects.
3. HP does not warrant that the operation of HP products will be uninterrupted or error free. If HP is unable, within a reasonable time, to repair or replace any product to a condition as warranted, customer will be entitled to a refund of the purchase price upon prompt return of the product.
4. HP products may contain remanufactured parts equivalent to new in performance or may have been subject to incidental use.
5. The warranty period begins on the date of delivery or on the date of installation if installed by HP. If customer schedules or delays HP installation more than 30 days after delivery, warranty begins on the 31st day from delivery.
6. Warranty does not apply to defects resulting from (a) improper or inadequate maintenance or calibration, (b) software, interfacing, parts or supplies not supplied by HP, (c) unauthorized modification or misuse, (d) operation outside of the published environmental specifications for the product, or (e) improper site preparation or maintenance.
7. TO THE EXTENT ALLOWED BY LOCAL LAW, THE ABOVE WARRANTIES ARE EXCLUSIVE AND NO OTHER WARRANTY OR CONDITION, WHETHER WRITTEN OR ORAL IS EXPRESSED OR IMPLIED AND HP SPECIFICALLY DISCLAIMS ANY IMPLIED WARRANTIES OR CONDITIONS OR MERCHANTABILITY, SATISFACTORY QUALITY, AND FITNESS FOR A PARTICULAR PURPOSE.
8. HP will be liable for damage to tangible property per incident up to the greater of \$300,000 or the actual amount paid for the product that is the subject of the claim, and for damages for bodily injury or death, to the extent that all such damages are determined by a court of competent jurisdiction to have been directly caused by a defective HP product.

9. TO THE EXTENT ALLOWED BY LOCAL LAW, THE REMEDIES IN THIS WARRANTY STATEMENT ARE CUSTOMER'S SOLE AND EXCLUSIVE REMEDIES. EXCEPT AS INDICATED ABOVE, IN NO EVENT WILL HP OR ITS SUPPLIERS BE LIABLE FOR LOSS OF DATA OR FOR DIRECT, SPECIAL, INCIDENTAL, CONSEQUENTIAL (INCLUDING LOST PROFIT OR DATA), OR OTHER DAMAGE, WHETHER BASED IN CONTRACT, TORT, OR OTHERWISE.

FOR CONSUMER TRANSACTIONS IN AUSTRALIA AND NEW ZEALAND: THE WARRANTY TERMS CONTAINED IN THIS STATEMENT, EXCEPT TO THE EXTENT LAWFULLY PERMITTED, DO NOT EXCLUDE RESTRICT OR MODIFY AND ARE IN ADDITION TO THE MANDATORY STATUTORY RIGHTS APPLICABLE TO THE SALE OF THIS PRODUCT TO YOU.



# DECLARATION OF CONFORMITY

according to ISO/IEC Guide 22 and EN 45014

Manufacturer's Name: Hewlett-Packard Co.

Manufacturer's Address: Spokane Division  
24001 E. Mission Avenue  
Liberty Lake, Washington 99019-9599  
USA

declares that the product

Product Name: RF Communication Test Set

Model Number: HP 8920B

Product Options: This declaration covers all options of the above product.

conforms to the following Product specifications:

Safety: IEC 1010-1:1990+A1 / EN 61010-1:1993  
CAN/CSA-C22.2 No. 1010.1-92

EMC: CISPR 11:1990/EN 55011:1991 Group 1, Class A  
IEC 801-2:1984/EN 50082-1:1992 4 kV CD, 8 kV AD  
IEC 801-3:1984/EN 50082-1:1992 3V/m  
IEC 801-4:1988/EN 50082-1:1992 0.5 kV Sig. Lines, 1 kV Power Lines

## Supplementary Information:

This product herewith complies with the requirements of the Low Voltage Directive 73/23/EEC and the EMC Directive 89/336/EEC.

Spokane, Washington USA    November 20, 1995  
Date

  
Vince Roland/Quality Manager

European Contact: Your local Hewlett-Packard Sales and Service Office or Hewlett-Packard GmbH  
Department ZQ/Standards Europe, Herrenberger Strasse 130, D-71034 Böblingen, Germany (FAX+49-7031-14-3143)

## Regional Sales and Service Offices

<p>Eastern USA Sales Office Hewlett-Packard Company 2101 Gather Rd. Rockville, MD 20850 Tel: (301) 258-2000</p>	<p>Eastern USA Sales Office Hewlett-Packard Company 2101 Gather Rd. Rockville, MD 20850 Tel: (301) 258-2000</p>	<p>Midwestern USA Sales and Service Hewlett-Packard Company 5201 Tollview Drive Rolling Meadows, IL 60008 Tel: (708) 342-2000</p>
<p>Southern USA Sales and Service Hewlett-Packard Company 1995 North Park Place Atlanta, GA 30339 Sales Tel: (404) 955-1500 Fax: (404) 980-7292 Service Tel: (404) 850-2544 Fax: (404) 980-7292</p>	<p>Southern USA Service Center Hewlett-Packard Company 930 E. Campbell Road Richardson, TX 75081 Tel: (214) 699-4331</p>	<p>Western USA Service Center Hewlett-Packard Company 301 E. Evelyn Avenue Mountain View, CA 94041 Tel: (415) 694-2000 Fax: (415) 694-0601</p>
<p>Western USA Sales and Service Hewlett-Packard Company 24 Inverness Place East Englewood, CO 80112 Sales Tel: (303) 649-5000 Fax: (303) 649-5787 Service Tel: (303) 649-5512 Fax: (303) 649-5787</p>	<p>Western USA Sales and Service Hewlett-Packard Company 1421 South Manhattan Avenue Fullerton, CA 92631 Sales Tel: (714) 999-6700 Fax: (714) 778-3033 Service Tel: (714) 758-5490 Fax: (714) 778-3033</p>	<p>United States of America Customer Information Center Hewlett-Packard Company Tel: (800) 752-0900 6:00 am to 5:00 pm Pacific Time Parts Direct: 1-800-227-8164</p>
<p>South Eastern Europe Sales and Service Hewlett-Packard Ges. m.b.h. Liebigasse 1 P.O. Box 72 A-1222 Vienna, Austria Telephone: 43 222 2500 0 Telex: 13 4425</p>	<p>European Multicountry Region Sales and Service Hewlett-Packard S.A. P.O. Box 95 150, Route dv Nant_dl_AVRIL CH-1217 Meyrin 2 Geneva, Switzerland Telephone: (41/22) 780-8111 Fax: (41/22) 780-8542</p>	<p>Northern Europe Sales and Service Hewlett-Packard Nederland B.V. Startbaan 16 1187 XR Amstelveen, The Netherlands P.O. Box 667 Telephone: 31/20 5476911 X 6631 Fax: 31-20-6471825NL</p>

<p>Asia Sales and Service Hewlett-Packard Asia Ltd. 22-30/F Peregrine Tower Lippo Center 89 Queensway, Central Hong Kong G.P.O. Box 863 Hong Kong Telephone: 852-848-7777 Fax: 852-868-4997</p>	<p>Japan Hewlett-Packard Japan, Ltd. Measurement Assistance Center 9-1, Takakura-Cho, Hachioji-Shi, Tokyo 192-8510, Japan  Telephone: (81)-426-56-7832 Fax: (81)-426-56-7840</p>	<p>International Sales Branch Headquarters Sales and Service Hewlett-Packard S.A. 39 Rue Veyrot P.O. Box 365 1217 Meyrin 1 Geneva, Switzerland Telephone: 41-22-780-4111 Fax: 41-22-780-4770</p>
<p>Australia, New Zealand Sales and Service Hewlett-Packard Ltd. P.O. Box 221 31-41 Joseph Street Blackburn, Victoria 3130 Telephone: (61/3) 895-2895 Fax: (61/3) 898-9257</p>	<p>Canada Sales and Service Hewlett-Packard (Canada) Ltd. 5150 Spectrum Way Mississauga, Ontario L4W 5G1 Canada Telephone: (416) 206-4725 Fax: (416) 206-4739</p>	<p>Canada Service Center Hewlett-Packard Company 17500 Transcanada Highway S. Serv Road Kirkland, Quebec H9J 2X8 Canada Telephone: (416) 206-3295</p>
<p>Canada Service Center Hewlett-Packard Ltd. 11120 178 Street Edmonton, Alberta T5S 1P2 Canada Telephone: (403) 486-6666 Fax: (403) 489-8764</p>	<p>Latin America Hewlett-Packard Company LAHQ Mexico City Col. Lomas de Virreyes 11000 Mexico D.F. Mexico Telephone: (52/5) 326-4000 Fax: (52/5) 202 7718</p>	<p>United Kingdom Sales and Service Hewlett-Packard Ltd. Cain Road Amen Corner Bracknell, Berkshire RG12 1HN United Kingdom Telephone: 44 344 360000</p>



**Making Measurements**

Using the PCS Interface .....	20
Compensating for Temperature Changes in the Interface ..	20
Connections .....	21
Analog Registration .....	22
Description .....	22
Test Conditions .....	22
Manual Operation .....	23
Automated Test Flowchart .....	24
Example HP BASIC Program .....	25
Analog Mobile Origination .....	28
Description .....	28
Test Conditions .....	28
Manual Operation .....	28
Automated Test Flowchart .....	29
Example HP BASIC Program .....	30
Analog Page .....	32
Description .....	32
Test Conditions .....	32
Manual Operation .....	33
Automated Test Flowchart .....	34
Example HP BASIC Program .....	35
Analog Release .....	38
Description .....	38
Test Conditions .....	38
Manual Operation .....	39
Automated Test Flowchart .....	40
Example HP BASIC Program .....	41
Analog Measurements: Call Control Screen .....	44
Description .....	44
Test Conditions .....	44
Manual Operation .....	45
Automated Test Flowchart .....	46
Example HP BASIC Program .....	46
Analog Measurements: Analog Measurements Screen .....	50
Description .....	50
Test Conditions .....	50
Manual Operation .....	51
Automated Test Flowchart .....	52
Example HP BASIC Program .....	52
Digital (TDMA) Call Processing .....	56
Description .....	56

---

# Contents

Test Conditions .....	56
Manual Operation .....	57
Automated Test Flowchart .....	58
Example HP Basic Program .....	58
TDMA Transmitter Measurements .....	62
Description .....	62
Test Conditions .....	62
Manual Operation .....	63
Automated Test Flowchart .....	64
Example HP BASIC Program .....	65
TDMA Receiver Sensitivity: BER & WER .....	68
Description .....	68
Test Conditions .....	68
Manual Operation .....	69
Automated Test Flowchart .....	70
Example HP BASIC Program .....	71
TDMA Receiver RSSI .....	74
Description .....	74
Test Conditions .....	74
Manual Operation .....	75
Automated Test Flowchart .....	76
Example HP BASIC Program .....	77
Testing Message Waiting Indicator Operation .....	80
Description .....	80
Test Conditions .....	80
Manual Operation .....	81
Automated Test Flowchart .....	82
Example HP BASIC Program .....	83
Testing Short Message Service Operation .....	86
Description .....	86
Test Conditions .....	86
Manual Operation .....	87
Automated Test Flowchart .....	88
Example HP BASIC Program .....	89
Caller ID .....	92
Description .....	92
Test Conditions .....	92
Manual Operation .....	93
Automated Test Flow Chart .....	94
Example HP BASIC Program .....	95
<b>HP 8920B Programming Concepts</b>	
Basic Input and Output Operations .....	100

Overview	100
Using the OUTPUT Statement to Send Commands	100
General Process for Changing Settings	100
Using the ENTER Statement Read Back Values	101
General Process for Reading Back (Querying) Values	101
A More Complete Example Program	102
Using Status Registers for Call Processing	103
Overview	103
Adding Error Trapping	104
Triggering Measurements	107
Overview	107
Using Repetitive Triggering	107
Using Single Triggering	108
Handling HP-IB Query Errors	109
Overview	109
Reducing Test Time	111
Overview	111
Changing Screens	111
Auto-ranging and Auto-tuning	111
Unnecessary Measurements	112
<b>IS-137 Test Descriptions</b>	
2.3.2.1 Receiver Signal Level Range Capability (RF Sensitivity)	114
Procedure Summary	114
HP 8920B Option 801 Method	114
2.3.2.1.1.3 Minimum Standard	114
2.3.2.5 Mobile Assisted Handoff/ Mobile Assisted Channel Allocation Bit Error Rate	115
Procedure Summary	115
HP 8920B Option 801 Method	115
2.3.2.5.3 Minimum Standard	115
3.1.2.2 Digital Frequency Stability	116
Procedure Summary	116
HP 8920B Option 801 Method	116
3.1.1.2.3 Minimum Standard	116
3.2.1.2 & 3.2.2 Digital RF Power Output	117
Procedure Summary	117
HP 8920B Option 801 Method	117
3.2.1.2.3 Minimum Standard for 800 MHz Equipment	117
3.2.2 Minimum Standard for 1900 MHz Equipment	117
3.3.2.1 Digital Modulation Type and Accuracy	118
Procedure Summary	118
HP 8920B Option 801 Method	118

3.3.2.1.3 Minimum Standard .....	118
3.4.1.2.1 Digital Adjacent and Alternate Channel Power Due to Modulation	
119	
Procedure Summary .....	119
HP 8920B Option 801 Method .....	119
3.4.1.2.1.3 Minimum Standard .....	119
3.6 Time Alignment .....	120
Procedure Summary .....	120
Tests Supported Using the HP 8920B Option 801 and	
HP 11807E Option 024 Software .....	121



---

# 1 Making Measurements

This application guide describes manual and automated procedures for testing Telecommunications Industry Association/Electronic Industries Alliance (TIA/EIA) Standard 136 mobile phones with the HP 83206A Cellular Adapter, HP 8920B Test Set, and the HP 83236B PCS Interface (if PCS mobiles are being tested). Each topic includes a description, test conditions, a manual procedure and a sample HP BASIC program.

This document is intended to be used as a tutorial and a quick reference document. The tests and procedures shown are those most commonly used by mobile manufacturers.

### About the TIA/EIA 136 and 137 Standards

These standards describes a Time Division Multiple Access (TDMA) cellular communications system. The major feature that distinguishes the TIA/EIA 136 and IS-137 standards from its predecessors, TIA/EIA-54B and 55, is the addition of a Digital Control Channel (DCCH).

### About the HP 83206A Cellular Adapter

The HP 83206A works with the HP 8920B to perform call processing, transmitter tests, and receiver tests on DAMPS (TIA/EIA 54) and DCCH (TIA/EIA 136) mobiles. [See IS-137 Test Descriptions on page 113.](#)

The HP 83206A is controlled by the host HP 8920B Test Set. Once installed, the adapter becomes part of the measurement path for the Test Set.

Without the Cellular Adapter, the Test Set can still test mobiles using standard analog modulation schemes, such as AMPS and NAMPS.

### About the HP 83236B PCS Interface

The PCS Interface extends the mobile test frequency range into the PCS band of 1.7 GHz to 2.0 GHz. The interface is controlled entirely by the Test Set using a serial cable connection between the instruments.

The Test Set detects the presence of the PCS Interface when the Test Set is powered-up. However, the PCS Interface is not automatically *enabled* at power up. Therefore, ***you must enable the PCS Interface on the Test Set's CONFIGURE screen before making PCS or cellular band measurements through the interface.*** Enabling the interface tells the Test Set that all measurements will be made through the interface and not through the Test Set's own RF IN/OUT port.

### Measuring High Level Analog Carriers

If you need to make high level power measurements (>1 Watt) on an analog carrier, disable the interface on the CONFIGURE screen and connect your signal directly to the Test Sets RF IN/OUT port. Do not exceed the level printed under the port.

**Figure 1-1. Accessing the HP 8920B Screens Used for IS-137 Tests**

To access the **CONFIGURE** screen to enable the **PCS Interface** (see [page 20](#))...  
Press the **SHIFT** key, then press the **DUPLEX** key.

To access the **CALL CONTROL** screen (to setup and perform mobile tests)...  
Select the **More** field in the bottom-right corner of the screen, and choose **CALL CNTL**.

**RX TEST**

SINAD [ ] dB AC Level [ ] V  
0.0010

RF Gen Freq: 100.000000 MHz  
AFGen1 Freq: 1.0000 kHz  
AFGen2 Freq: 1.0000 kHz  
Filter 1: 50Hz HPF  
Filter 2: 15kHz LPF  
Ext Load: 8.00 a

Amplitude: -80.0 dBm  
AFGen1 To: 3.00 kHz  
AFGen2 To: Off

Atten Hold: On/Off  
Output Port: RF Out/Dupl

Choices:  
More  
IO CONFIG  
PRNT CNFG  
AD CH PWR  
TOMA TEST  
PDC TEST  
PDC LST  
CALL CNTL  
More

**CALL CONTROL**

Display: Data/Meas

Active [ ]  
Register [ ]  
Page [ ]  
Access [ ]  
Connect [ ]

Active Register: AMPS  
Page: Cntrl Chan  
Handoff: 321  
Release: Chan: - 212

Order: Amplitude: -50.0 dBm  
Chns PL 0: Pwr Lvl: - 4  
MS Id: SID: 5970Hz  
Phone Num: 231

To Screen:  
CALL CNTL  
CALL DATA  
CALL BIT  
CALL CNFG  
ANLG MEAS  
SPEC ANL  
AUTHN  
More

To access the **DCCH CALL CONFIGURE** and **DCCH CALL CONFIGURE II** screens for DCCH call processing operations and temperature compensation...  
Set the **System Type** field to **DCCH** on the **CALL CONTROL** screen, then select the desired configuration screen.

**CALL CONTROL**

Display: Data/Meas

Active [ ]  
Register [ ]  
Page [ ]  
Access [ ]  
Conn [ ]

Active Register: DCCH  
Page: Cntrl Chan  
Handoff: 42  
Release: Dia/Analog Cellular  
Cntl Order: Amplitude: -50.0 dBm  
Send MWI: SID: 231  
Phone Num: 231

Traffic Chan Assignment: Type: - DTC  
Band: - Cellular  
Chan: - 2  
Slot: - 1  
Pwr Lvl: - 4  
DVCC: - 1  
Voc: - VSELP

To Screen:  
CALL CNTL  
CALL CNFG  
CALL CFG2  
ANLG MEAS  
SPEC ANL  
AUTHN  
DIG MEAS  
More

**DCCH CALL CONFIGURE**

DCCH DVCC: 128  
Country Code: 310  
Sat Tol: Access Burst  
Narrow: [ ]  
Power Meter: DTC Burst  
RF Path: [ ]  
ByPass/IO: [ ]  
% BIT ERROR: 0.00 %  
Res Conf: [ ]  
On/Off: [ ]

SMS Contents: SMS Type: SMS Size: 30

Public Sys: On/Off: # Systems: 0 SOC: 0

# Neighbors: 0

To Screen:  
CALL CNTL  
CALL CNFG  
CALL CFG2  
ANLG MEAS  
SPEC ANL  
DIG MEAS  
More

**DCCH CALL CONFIGURE II**

Nun Voice: 0  
Nun SMS: 0  
Nun Fax: 0  
Temperature: Compensate  
MS Capab: Cellular

Calling Nun: [ ]  
Calling Name: [ ]  
Name Size: 0  
Pres Type: [ ]  
Pres OK: [ ]  
Screen Ind: [ ]  
Not Scrn: [ ]

To Screen:  
CALL CNTL  
CALL CNFG  
CALL CFG2  
ANLG MEAS  
SPEC ANL  
AUTHN  
DIG MEAS  
More

Making Measurements

## Using the PCS Interface

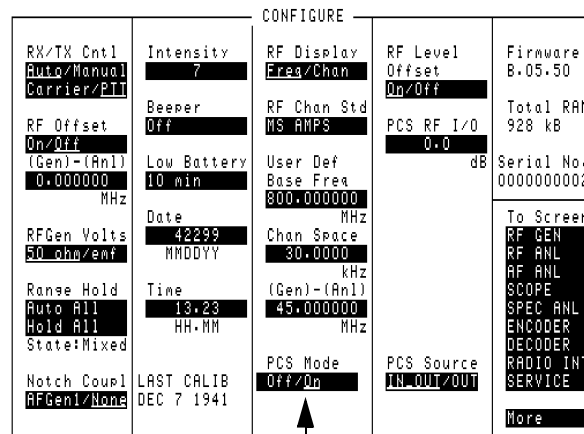
The PCS Interface must first be connected to the test set as shown in the instructions for TDMA subscriber (mobile) testing in the HP 83236B Operating Manual.

The test set looks for the PCS Interface through its serial control connection *when the test set is first turned on*. Always turn the PCS Interface and test set on at the same time, or turn the PCS Interface on before turning on the test set.

**IMPORTANT!** The PCS Interface is disabled if test set power is cycled or if the **PRESET** key is pressed. To enable the use of the interface, you must set the PCS Mode field in the CONFIGURE screen to On.

*The Analog Registration program listing contains an example of how to automatically detect the presence of the PCS interface and enable it if present.*

If you are using the PCS Interface and cannot get the mobile to find a control channel or make any measurements, make sure you have enabled the interface before trying to find another cause.



Set to On to use the PCS Interface.

## Compensating for Temperature Changes in the Interface

Operation varies over time as the interface warms up. To compensate for the change, select the Temperature field on the DCCH CALL CONFIGURE II screen after the interface has been on for 30 minutes. If the temperature has changed enough to require compensation, the interface will begin a compensation routine that lasts several seconds (you will hear the interface making several clicking sounds during the procedure). If compensation is not needed, the interface will not start the compensation routine.

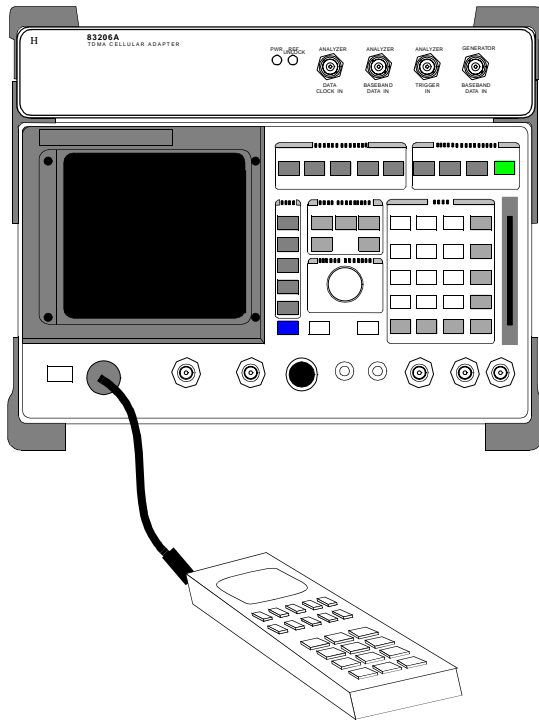
You can query the need to compensate first (optional), or just issue the compensation command periodically. Compensation occurs only if needed after issuing the command:

```
SERV:LATCH:SEL 'pcs_temp_comp_status' !Select compensation status latch.  
SERV:LATCH:VAL? !Query latch value. Returns 1 if needed, 0 if not needed.  
CALLP:DCCH:PCS:TEMP:COMP !Start the compensation process.
```

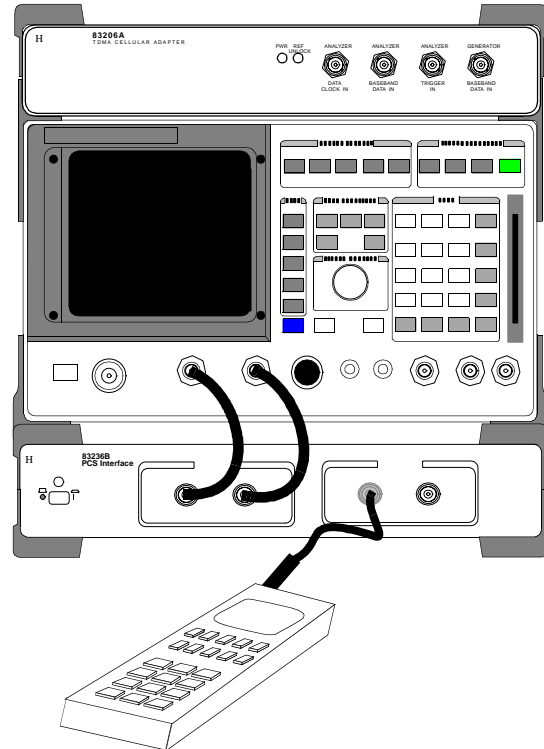
## Connections

All of the tests described in this document use a single connection from the mobile's antenna connector (or test port) to the RF IN/OUT port on the Test Set or PCS Interface. No separate audio connections are used.

### Cellular Band (800 MHz) Testing Without the PCS Interface



### Dual-Band PCS (1900 MHz) and Cellular (800 MHz) Testing With the PCS Interface



## Analog Registration

### Description

This function causes the mobile station to “register” with the test set. This function causes the phone to send data such as Mobile Identification Number, Electronic Serial Number, and phone type (Station Class Mark).

Simulating this with the test set requires placing the test set into an analog “active” mode to simulate an active analog cell site. When the phone locks onto the test set and indicates service, the registration function is selected on the test set. The test set sends a series of alternating registration messages over the air until the mobile phone detects the messages and responds. The test set then decodes and displays the registration data sent from the mobile.

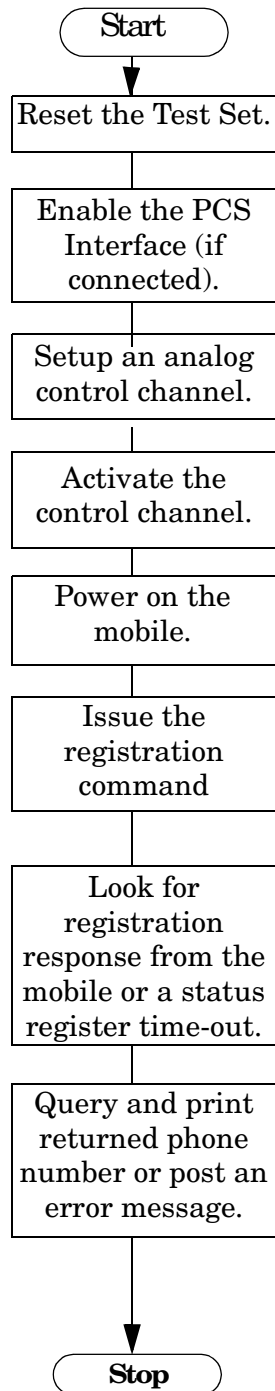
### Test Conditions

- CALL CONTROL screen
- System Type = DCCH
- Control Channel = Analog, Channel Number 321
- RF Amplitude = -50 dBm (default)

## Manual Operation

- Press **PRESET**.
- If a PCS Interface is used, set the `PCS Mode` field on the `CONFIGURE` screen to `On`.
- Display the `CALL CONTROL` screen.
- Set the `System Type` field to `DCCH`.
- For PCS mobiles:
  - Set the `MS Capab` field (`DCCH CALL CONFIGURE II` screen) to `US PCS`.
  - Set the `Voc:` field (`CALL CONTROL` screen) to match the mobile's vocoder (typically `ACELP`).
- Set the `Cntrl Chan` field to Analog. The default channel number is 42; change it as needed for your mobile to find service (camp).
- Power on the mobile and wait until it indicates service.
- Select the `Register` field.

## Automated Test Flowchart





## Example HP BASIC Program

---

**NOTE** This program contains subroutines for time-out protection and PCS interface detection. These routines should be used in all TIA/EIA 136 call processing programs, but are not shown in the remaining programming examples in this document in order to highlight specific call processing procedures.

---

```

10  ! This program implements Analog Registration.
20  ! Monitors the 'Register' LED to determine when
30  ! registration is complete. Automatic enabling of
40  ! a connected and powered on PCS interface is provided.
50  ON TIMEOUT 7,8 CALL Escape !Recover from bus hangup.
60  COM Ts
70  CLEAR SCREEN
80  Ts=714
90  Reset_ts
100 Check_pcs
110 Setup_acc
120 Set_to_active
130 PRINT "Instructions: Turn the phone on now."
140 Register_mobile
150 END
160 Set_to_active: SUB Set_to_active
170     COM Ts
180     OUTPUT Ts;"STAT:CALLP:PTR 1"! Arm Bit 0 of the PTR register
190     OUTPUT Ts;"*CLS"! Clear Status Event Registers
200     OUTPUT Ts;"CALLP:ACTIVE"
210     REPEAT
220         OUTPUT Ts;"STAT:CALLP:EVENT?"
230         ENTER Ts;Register
240         WAIT .2 ! Gives the testset time to service other processes
250         UNTIL Register ! Returns 0 until one of the bits is set
260     SUBEND
270 Reset_ts: SUB Reset_ts
280     COM Ts
290     OUTPUT Ts;"*RST;*OPC?"! Good reset technique
300     ENTER Ts;Done

```

## Making Measurements

### Analog Registration

```
310     OUTPUT Ts;"DISP ACNT"! Analog Call Control Screen
320     OUTPUT Ts;"CALLP:CSYS `DCCH`" ! Select the TIA/EIA 136 standard.
330     SUBEND
340 Register_mobile: SUB Register_mobile
350     COM Ts
360     OUTPUT Ts;"STAT:CALLP:PTR 0"! Don't latch positive transitions
370     OUTPUT Ts;"STAT:CALLP:NTR 2"! Latch "Register" LED turning off
380     OUTPUT Ts;"*CLS"! Clear Status Event Registers
390     OUTPUT Ts;"CALLP:TIM REG,30" !Optional: registration timeout 30secs.
400     OUTPUT Ts;"CALLP:REGISTER"
410     REPEAT
420         OUTPUT Ts;"*ESR?;:STAT:CALLP:EVENT?"
430         ENTER Ts;Esr,Register
440         WAIT .2 ! Gives the testset time to service other processes
450         UNTIL Register OR Esr ! Returns 0 until one of the bits is set
460         IF Esr THEN
470             PRINT "Error with Registration"
480             STOP
490         ELSE
500             OUTPUT Ts;"CALLP:PNUM?"
510             ENTER Ts;Phone_num$
520             PRINT
530             PRINT "Registration Successful!"
540             PRINT "Phone number is ";Phone_num$
550         END IF
560     SUBEND
570 Check_pcs:      SUB Check_pcs
580     COM Ts
590     OUTPUT Ts;"CALLP:DCCH:PCS:CONN?"
600     ENTER Ts;Pcs_detect$
610     IF Pcs_detect$<>" ""PRES"" THEN
620         SUBEXIT
630     ELSE !If PCS Interface is present.
640         OUTPUT Ts;"CALLP:DCCH:PCS:MODE `ON`"
650         OUTPUT Ts;"CALLP:DCCH:VOC `ACELP`"
660         OUTPUT Ts;"CALLP:DCCH:MSCapability:BAND `US PCS`" !Select PCS MS.
```

```
670     END IF
680     SUBEND
690 Escape: SUB Escape
700     COM Ts
710     CLEAR 7
720     LOCAL Ts
730     PRINT "Measurement Query Failed"
740     SUBEND
750 Setup_acc: SUB Setup_acc !Setup an analog control channel.
760     COM Ts
770     OUTPUT Ts;"CALLP:CSYS `DCCH`"           !System Type
780     OUTPUT Ts;"CALLP:DCCH:CCTY `ANALOG`"    !Control Channel type.
790     OUTPUT Ts;"CALLP:DCCH:CCH 321" !Cntrl Chan number - set as needed.
800     SUBEND
```

## Analog Mobile Origination

### Description

This function causes the mobile station to initiate a call to the test set. This function simulates an actual origination that would normally happen when a cellular phone user places a call with the local cellular system. The end result of this function is that a voice channel is established between the test set and the mobile.

Simulating this with the test set requires placing the test set into an analog “active” mode. This causes the test set to simulate an active analog cell site. When the phone locks onto the test set and indicates service, the user dials a phone number on the mobile phone and presses SEND. The test set receives the request from the mobile and assigns the mobile to a voice channel.

The Traffic Chan Assignment group on the CALL CONTROL screen determines the settings for the voice channel the mobile is told to go to.

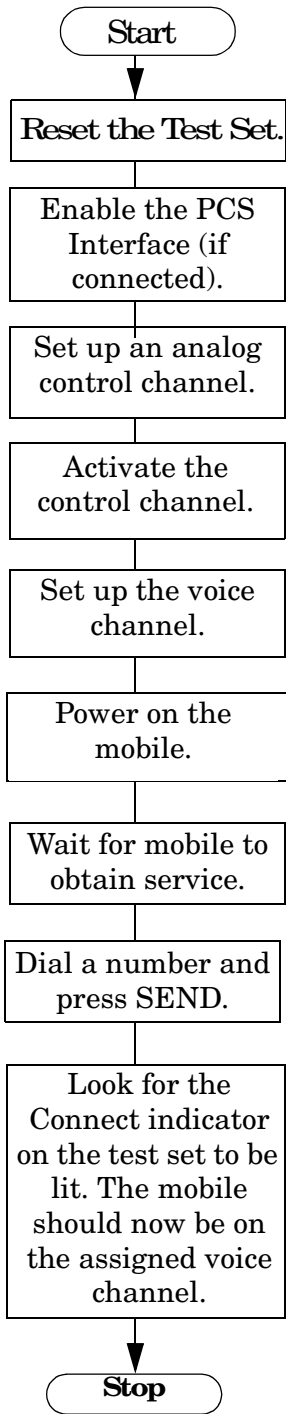
### Test Conditions

- Control Channel = Analog, Channel Number 321
- RF Amplitude = -50 dBm (default)

### Manual Operation

- Press **PRESET**.
- If a PCS Interface is used, set the PCS Mode field on the CONFIGURE screen to On.
- Display the CALL CONTROL screen.
- Set the System Type field to DCCH.
- For PCS mobiles:
  - Set the MS Capab field (DCCH CALL CONFIGURE II screen) to US PCS.
  - Set the Voc: field (CALL CONTROL screen) to match the mobile’s vocoder (typically ACELP).
- Set the Cntrl Chan type to Analog. The default channel number is 42; change it as needed for your mobile to find service (camp).
- In the Traffic Chan Assignment area:
  - Set the Type to AVC.
  - Set the Chan to 777.
- Power on the mobile and wait until it indicates service.
- Dial a number on the mobile and press **SEND**.
- The mobile should connect, shown by the lit Connect indicator on the test set.

### Automated Test Flowchart



Making Measurements

## Example HP BASIC Program

For simplicity, the following program listing assumes a PCS Interface is present (and enables it) and does not contain an error handling routine.

```
10    ! This uses the built-in analog call processing.
20    ! This program implements Active and Origination.
30    ! Monitors the 'Connect' LED to determine if page is successful.
40    ! Monitors ESR to trap errors during the origination.
50    COM Ts
60    CLEAR SCREEN
70    Ts=714
80    CALL Reset_ts
90    CALL Enable_pcs
100   CALL Setup_acc
110   CALL Set_to_active
120   CALL Setup_trafchan
130   CALL Originate
140   END
150 Set_to_active: SUB Set_to_active
160     COM Ts
170     OUTPUT Ts;"STAT:CALLP:PTR 1"! Arm Bit 0 of the PTR register
180     OUTPUT Ts;"*CLS"! Clear Status Event Registers
190     OUTPUT Ts;"CALLP:ACTIVE"
200     REPEAT
210         OUTPUT Ts;"STAT:CALLP:EVENT?"
220         ENTER Ts;Active
230         WAIT .2 ! Gives the testset time to service other processes
240         UNTIL Active ! Returns 0 until one of the bits is set
250     SUBEND
260 Reset_ts: SUB Reset_ts
270     COM Ts
280     OUTPUT Ts;"*RST;*OPC?"! Good reset technique
290     ENTER Ts;Done
300     OUTPUT Ts;"DISP ACNT"! Analog Call Control Screen
310     SUBEND
320 !
```

```

330 Originate: SUB Originate
340     COM Ts
350     PRINT "Instructions: Turn the phone on now"
360     PRINT "When the phone shows service, dial a number and press SEND"
370     OUTPUT Ts;"STAT:CALLP:PTR 32" ! Latch "Connect" LED
380     OUTPUT Ts;"STAT:CALLP:NTR 0" ! Ignore All Negative Transitions
390     OUTPUT Ts;"*CLS"! Clear Status Event Registers
400     REPEAT
410         OUTPUT Ts;"*ESR?;:STAT:CALLP:EVENT?"
420         ENTER Ts;Esr,Connect
430         IF Esr<>0 THEN
440             PRINT "Error during origination"
450             STOP
460         END IF
470         WAIT .2 ! Gives the testset time to service other processes
480     UNTIL Connect ! Returns 0 until one of the bits is set
490     PRINT "Origination Successful!"
500     SUBEND
510 Enable_pcs: SUB Enable_pcs
520     COM Ts
530     OUTPUT Ts;"CALLP:DCCH:PCS:MODE `ON`"
540     OUTPUT Ts;"CALLP:DCCH:VOC `ACELP`"
550     OUTPUT Ts;"CALLP:DCCH:MSCapability:BAND `US PCS`"
560     SUBEND
570 Setup_acc: SUB Setup_acc !Setup an analog control channel.
580     COM Ts
590     OUTPUT Ts;"CALLP:CSYS `DCCH`" !Set the System Type to DCCH.
600     OUTPUT Ts;"CALLP:DCCH:CCTY `ANALOG`" !Select Analog control channel.
610     OUTPUT Ts;"CALLP:DCCH:CCH 321" !Change Cntrl Chan number as needed.
620     SUBEND
630 Setup_trafchan: SUB Setup_trafchan !Setup Analog Voice (traffic) Channel.
640     COM Ts
650     OUTPUT Ts;"CALLP:DCCH:VTYPE `AVC`" !Go to an Analog Voice Channel.
660     OUTPUT Ts;"CALLP:DCCH:AVChannel:VChannel 777" !AVC number.
670     SUBEND

```

## Analog Page

### Description

This function causes the base station to initiate a call to the mobile station. This function simulates an actual page that would normally happen when a base station is trying to set up a call with a cellular phone user operating within the base station cell area. The end result of this function is that a voice channel is established between the test set and the mobile.

Before attempting a page, it is necessary for the test set to know the phone number or MIN of the mobile it is trying to page. If you know the phone number or MIN, you can enter the number into the MS ID field before paging. If you do not know the phone number or MIN, you can get them by having the mobile find service on an active control channel and then registering the mobile. Registering the mobile automatically enters the phone number into the MS ID field.

When the mobile locks onto the test set and indicates service, the Page function is selected on the test set to alert the mobile that someone is trying to call. The mobile responds by ringing. To answer (complete) the call, the user typically presses the mobile's SEND key. When the call is completed, the test set indicates that it is in the Connect state.

### Test Conditions

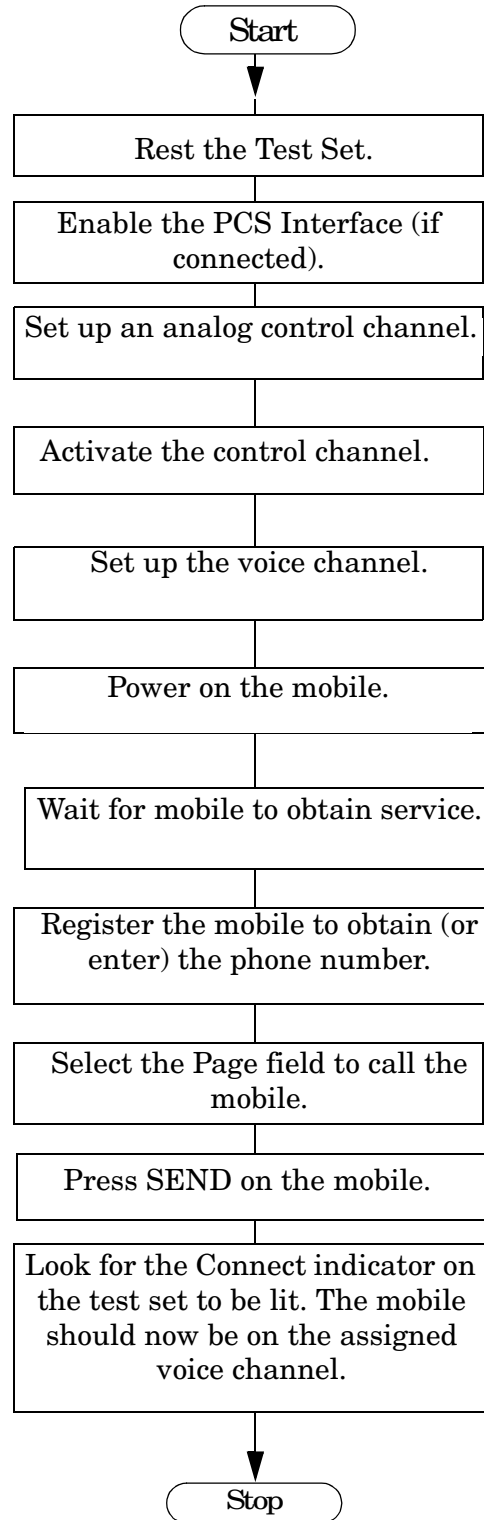
- System Type = DCCH
- Control Channel = Analog, Channel 321
- RF Amplitude = -50 dBm (default)



## Manual Operation

- Press **PRESET**.
- If a PCS Interface is used, set the `PCS Mode` field on the `CONFIGURE` screen to `On`.
- Display the `CALL CONTROL` screen.
- Set the `System Type` field to `DCCH`.
- For PCS mobiles:
  - Set the `MS Capab` field (`DCCH CALL CONFIGURE II` screen) to `US PCS`.
  - Set the `Voc:` field (`CALL CONTROL` screen) to match the mobile's vocoder (typically `ACELP`).
- Set the `Cntrl Chan type` to Analog. The default channel number is 42; change it as needed for your mobile to find service (idle).
- In the `Traffic Chan Assignment` area:
  - Set the `Type` to `AVC`.
  - Set the `Chan` to 777.
- Power on the mobile and wait until it indicates service.
- Enter the mobile's MIN or phone number in the `MS Id` field, OR select the `Register` field and wait for the phone to register and automatically enter the phone number.
- Select the `Page` field. The mobile should respond by going to the assigned voice channel and alerting the user (ringing).
- Press the `SEND` key on the mobile to complete the call.
- The mobile should connect, shown by the lit `Connect` indicator on the test set.

## Automated Test Flowchart



## Example HP BASIC Program

For simplicity, the following program listing assumes a PCS Interface is present and enables it.

```

10    ! This program implements AMPS Registration and Page
20    ! Monitors the 'Register' LED and 'Connect' LED
30    ! to determine when successful.
40    ! Includes error checking with ESR register.
50    COM Ts
60    CLEAR SCREEN
70    Ts=714
80    Reset_ts
90    Enable_pcs
100   Setup_acc
110   Set_to_active
120   Setup_trafchan
130   PRINT "Instructions: Turn the phone on now"
140   Register_mobile
150   Page
160   END
170 Set_to_active: SUB Set_to_active
180     COM Ts
190     OUTPUT Ts;"STAT:CALLP:PTR 1"! Arm Bit 0 of the PTR register
200     OUTPUT Ts;"*CLS"! Clear Status Event Registers
210     OUTPUT Ts;"CALLP:ACTIVE"
220     REPEAT
230       OUTPUT Ts;"STAT:CALLP:EVENT?"
240       ENTER Ts;Active
250       WAIT .2 ! Gives the testset time to service other processes
260       UNTIL Active ! Returns 0 until one of the bits is set
270     SUBEND
280 Reset_ts: SUB Reset_ts
290     COM Ts
300     OUTPUT Ts;"*RST;*OPC?"! Good reset technique
310     ENTER Ts;Done
320     OUTPUT Ts;"DISP ACNT"! Analog Call Control Screen
330     SUBEND

```

```
340 Register_mobile: SUB Register_mobile
350     COM Ts
360     OUTPUT Ts;"STAT:CALLP:PTR 0"! Don't latch positive transitions
370     OUTPUT Ts;"STAT:CALLP:NTR 2"! Latch "Register" LED turning off
380     OUTPUT Ts;"*CLS"! Clear Status Event Registers
390     OUTPUT Ts;"CALLP:TIM REG,30" !Registration timeout 30 secs (option).
400     OUTPUT Ts;"CALLP:REGISTER"
410     REPEAT
420         OUTPUT Ts;"*ESR?;:STAT:CALLP:EVENT?"
430         ENTER Ts;Esr,Register
440         WAIT .2 ! Gives the testset time to service other processes
450         UNTIL Register OR Esr ! Returns 0 until one of the bits is set
460         IF Esr THEN
470             PRINT "Error with Registration"
480             STOP
490         ELSE
500             OUTPUT Ts;"CALLP:PNUM?"
510             ENTER Ts;Phone_num$
520             PRINT
530             PRINT "Registration Successful!"
540             PRINT "Phone number is ";Phone_num$
550         END IF
560     SUBEND
570 Page: SUB Page
580     COM Ts
590     PRINT "When the phonerings, press send"
600     OUTPUT Ts;"STAT:CALLP:PTR 32" ! Latch 'Connect' LED
610     OUTPUT Ts;"STAT:CALLP:NTR 0"
620     OUTPUT Ts;"*CLS"! Clear Status Event Registers
630     OUTPUT Ts;"CALLP:PAGE"
640     REPEAT
650         OUTPUT Ts;"*ESR?;:STAT:CALLP:EVENT?"
660         ENTER Ts;Esr,Page
670         WAIT .2 ! Gives the testset time to service other processes
680         UNTIL Page OR Esr ! Returns 0 until one of the bits is set
690         IF Esr THEN
```

```
700     PRINT "Error with Page"
710     STOP
720     END IF
730     PRINT "Page was Successful!"
740     SUBEND
750 Enable_pcs:     SUB Enable_pcs
760     COM Ts
770     OUTPUT Ts;"CALLP:DCCH:PCS:MODE `ON`"
780     OUTPUT Ts;"CALLP:DCCH:VOC `ACELP`"
790     OUTPUT Ts;"CALLP:DCCH:MSCapability:BAND `US PCS`"
800     SUBEND
810 Setup_acc: SUB Setup_acc
820     COM Ts
830     OUTPUT Ts;"CALLP:CSYS `DCCH`" !Set System Type to DCCH.
840     OUTPUT Ts;"CALLP:DCCH:CCTY `ANALOG`" !Select Analog control channel.
850     OUTPUT Ts;"CALLP:DCCH:CCH 321" !Change Cntrl Chan number as needed.
860     SUBEND
870 Setup_trafchan: SUB Setup_trafchan
880     COM Ts
890     OUTPUT Ts;"CALLP:DCCH:VTYP `AVC`"
900     OUTPUT Ts;"CALLP:DCCH:AVChannel:VChannel 777"
910     SUBEND
```

## Analog Release

### Description

This function causes the base station to release an active call on a voice channel. When the release is sent to the mobile, the test set returns to the “active” state and begin transmitting on the control channel. The mobile returns to scanning for control channels, and should eventually lock back onto the control channel the test set is sending.

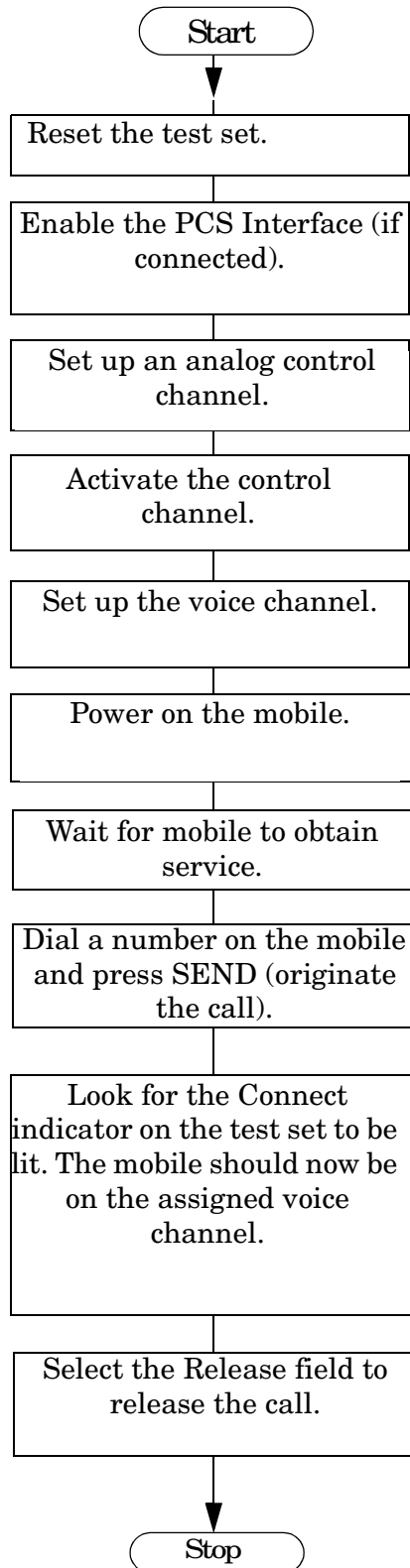
### Test Conditions

- System Type = DCCH
- Control Channel = Analog, Channel Number 321
- RF Amplitude = -50 dBm (default)

## Manual Operation

- Press **PRESET**.
- If a PCS Interface is used, set the PCS Mode field on the CONFIGURE screen to On.
- Display the CALL CONTROL screen.
- Set the System Type to DCCH.
- For PCS mobiles:
  - Set the MS Capab field (DCCH CALL CONFIGURE II) screen to US PCS.
  - Set the Voc: field (CALL CONTROL screen) to match the mobile's vocoder (typically ACELP).
- Set the Cntrl Chan type to Analog. The default channel number is 42; change it as needed for your mobile to find service (camp).
- In the Traffic Chan Assignment area:
  - Set the Type to AVC.
  - Set the Chan to 777.
- Power on the mobile and wait until it indicates service.
- Dial a phone number on the mobile and press **SEND** (originate a call).
- The mobile should connect, shown by the lit Connect indicator on the test set.
- Select the Release field (on the Test Set) to release the call.

## Automated Test Flowchart





## Example HP BASIC Program

For simplicity, the following program listing assumes a PCS Interface is present and enables it.

```

10    ! This program implements the Active, Registration, Originate,
20    ! and Release states. It monitors the 'Connect' LED to determine
30    ! if page is successful, monitors ESR to trap origination errors, and
40    ! monitors the 'Active' LED to determine if release was successful.
50    COM Ts
60    CLEAR SCREEN
70    Ts=714
80    CALL Reset_ts
90    CALL Enable_pcs
100   CALL Setup_acc
110   CALL Set_to_active
120   CALL Setup_trafchan
130   CALL Originate
131   CALL Release
140   END

150 Set_to_active: SUB Set_to_active
160     COM Ts
170     OUTPUT Ts;"STAT:CALLP:PTR 1"! Arm Bit 0 of the PTR register
180     OUTPUT Ts;"*CLS"! Clear Status Event Registers
190     OUTPUT Ts;"CALLP:ACTIVE"
200     REPEAT
210         OUTPUT Ts;"STAT:CALLP:EVENT?"
220         ENTER Ts;Active
230         WAIT .2 ! Gives the testset time to service other processes
240         UNTIL Active ! Returns 0 until one of the bits is set
250     SUBEND

260 Reset_ts: SUB Reset_ts
270     COM Ts
280     OUTPUT Ts;"*RST;*OPC?"! Good reset technique
290     ENTER Ts;Done
300     OUTPUT Ts;"DISP ACNT"! Analog Call Control Screen
310     SUBEND
320 !

```

## Making Measurements

### Analog Release

```
330 Originate: SUB Originate
340     COM Ts
350     PRINT "Instructions: Turn the phone on now"
360     PRINT "When the phone shows service, dial a number and press SEND"
370     OUTPUT Ts;"STAT:CALLP:PTR 32" ! Latch "Connect" LED
380     OUTPUT Ts;"STAT:CALLP:NTR 0" ! Ignore All Negative Transitions
390     OUTPUT Ts;"*CLS"! Clear Status Event Registers
400     REPEAT
410         OUTPUT Ts;"*ESR?;:STAT:CALLP:EVENT?"
420         ENTER Ts;Esr,Originate
430         IF Esr<>0 THEN
440             PRINT "Error during origination"
450             STOP
460         END IF
470         WAIT .2 ! Gives the testset time to service other processes
480         UNTIL Originate ! Returns 0 until one of the bits is set
490         PRINT "Origination Successful!"
500     SUBEND
510 Enable_pcs: SUB Enable_pcs
520     COM Ts
530     OUTPUT Ts;"CALLP:DCCH:PCS:MODE 'ON'"
540     OUTPUT Ts;"CALLP:DCCH:VOC 'ACELP'"
550     OUTPUT Ts;"CALLP:DCCH:MSCapability:BAND 'US PCS'"
560     SUBEND
570 Setup_acc: SUB Setup_acc
580     COM Ts
590     OUTPUT Ts;"CALLP:CSYS 'DCCH'" !Set the System Type to DCCH.
600     OUTPUT Ts;"CALLP:DCCH:CCTY 'ANALOG'" !Select Analog control channel.
610     OUTPUT Ts;"CALLP:DCCH:CCH 321" !Change Cntrol Chan number as needed.
620     SUBEND
630 Setup_trafchan: SUB Setup_trafchan !Setup AVC channel 777.
640     COM Ts
650     OUTPUT Ts;"CALLP:DCCH:VTYPE 'AVC'" !Go to an Analog Voice Channel.
660     OUTPUT Ts;"CALLP:DCCH:AVCHannel:VCHannel 777" !AVC number.
670     SUBEND
```

```
680 Release: SUB Release
690     COM Ts
700     PRINT "Getting ready to release the call..."
710     WAIT 3
720     OUTPUT Ts;"STAT:CALLP:PTR 1" !Latch "Active" LED
730     OUTPUT Ts;"STAT:CALLP:NTR 0" !Ignore All Negative Transitions
740     OUTPUT Ts;"*CLS" !Clear the Event Status Registers (ESR)
750     OUTPUT Ts;"CALLP:RELease" !Release the call.
760     REPEAT
770         OUTPUT Ts;"*ESR?;:STAT:CALLP:EVENT?"
780         ENTER Ts;Esr,Release
790         IF Esr<>0 THEN
800             PRINT "Error during RELEASE"
810             STOP
820         END IF
830         WAIT .2 ! Gives the test set time to service other processes.
831     UNTIL Release ! Returns 0 until one of the bits is set.
840     PRINT "Release Successful!"
850     SUBEND
```

## Analog Measurements: Call Control Screen

### Description

This section demonstrates using the analog measurement functions on the CALL CONTROL screen. The CALL CONTROL screen can be used for making Tx Frequency Error and Tx Power measurements, as well as analog modulation measurements.

Whenever possible, it is desirable to use the CALL CONTROL screen for making these measurements. This allows call processing functions (like handoffs) to be intermixed with measurements. By intermixing measurements and call processing, this will save the time and programming associated with switching to the ANALOG MEASUREMENTS screen.

To make measurement's on the CALL CONTROL screen, set up the voice channel as usual with either an origination or a page. On the CALL CONTROL screen, change the display from 'data' to 'meas' to display four measurements at the top of the screen. In addition to Tx Frequency Error and Tx Power measurements, the measurements for FM deviation and AF frequency are available. The limitation of using these latter two measurements is that the filters and inputs associated with these measurements should not be changed.

The proper settings for audio filters 1 and 2, de-emphasis, audio analyzer input, and IF filter bandwidth are necessary for the CALL CONTROL functionality to work correctly.

They are *automatically* configured each time the CALL CONTROL screen is accessed.

When the test set is in the Active state (sending a control channel), the automatic settings for these are:

- Filter 1, <20Hz HPF
- Filter 2, >99kHz LPF
- De-emphasis OFF
- AF Analyzer Input (AF Anl In) is set to FM Demod
- IF Filter, 230 kHz

When the test set is in the Connect state (on an analog voice channel), the audio filter settings automatically change to:

- Filter 1, 300Hz HPF
- Filter 2, 15kHz LPF

The rest of the audio and IF settings remain where they were set for the Active state.

### Test Conditions

- System Type = DCCH
- Control Channel = Analog, Channel Number 321
- RF Amplitude = -50 dBm (default)

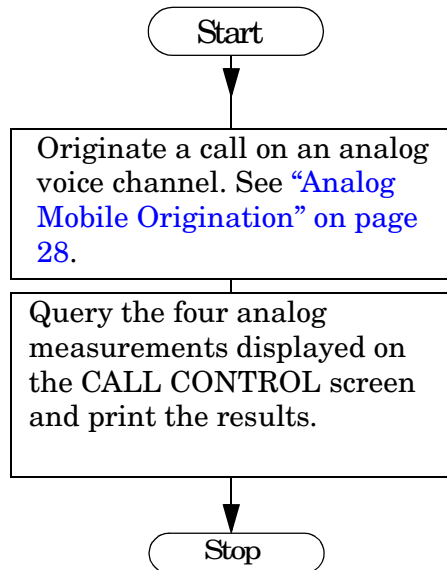
## Manual Operation

- Press **PRESET**.
- If a PCS Interface is used, set the PCS Mode field on the CONFIGURE screen to On.
- Display the CALL CONTROL screen.
- Set the System Type to DCCH.
- For PCS mobiles:
  - Set the MS Capab field (DCCH CALL CONFIGURE II) screen to US PCS.
  - Set the Voc: field (CALL CONTROL screen) to match the mobile's vocoder (typically ACELP).
- Set the Cntrl Chan type to Analog. The default channel number is 42; change it as needed for your mobile to find service (camp).
- In the Traffic Chan Assignment area:
  - Set the Type to AVC.
  - Set the Chan to 777.
- Power on the mobile and wait until it indicates service.
- Dial a number on the mobile and press **SEND** (originate a call).
- The mobile should connect, shown by the lit Connect indicator on the test set.
- Select the Display field on the CALL CONTROL screen to underline Meas.
- Read the TX Freq Error and TX Power (Avg) RF measurements.
- With the mobile's microphone muted<sup>1</sup>, read the SAT tone's FM Deviation and AF Freq AF measurements.

---

1. The mobile's microphone must be muted so that unintended audio modulation does not combine with the SAT signal and create SAT measurement errors.

## Automated Test Flowchart



## Example HP BASIC Program

```
10 ! This uses the built-in analog call processing.
20 ! This program implements Active and Origination.
30 ! Monitors the 'Connect' LED to determine if page is successful.
40 ! Monitors ESR to trap errors during the origination.
50 ! Queries and prints analog measurement results.
60 COM Ts
70 CLEAR SCREEN
80 Ts=714
90 CALL Reset_ts
100 CALL Enable_pcs
110 CALL Setup_acc
120 CALL Set_to_active
130 CALL Setup_trafchan
140 CALL Originate
150 CALL Enable_meas
160 CALL Meas_freqerr
170 CALL Meas_fmdev
180 CALL Meas_affreq
190 CALL Meas_txpower
200 END
```

```
210 Set_to_active: SUB Set_to_active
220     COM Ts
230     OUTPUT Ts;"STAT:CALLP:PTR 1"! Arm Bit 0 of the PTR register
240     OUTPUT Ts;"*CLS"! Clear Status Event Registers
250     OUTPUT Ts;"CALLP:ACTIVE"
260     REPEAT
270         OUTPUT Ts;"STAT:CALLP:EVENT?"
280         ENTER Ts;Register
290         WAIT .2 ! Gives the testset time to service other processes
300     UNTIL Register ! Returns 0 until one of the bits is set
310 SUBEND
320 Reset_ts: SUB Reset_ts
330     COM Ts
340     OUTPUT Ts;"*RST;*OPC?"! Good reset technique
350     ENTER Ts;Done
360     OUTPUT Ts;"DISP ACNT"! Analog Call Control Screen
370 SUBEND
380 !
390 Originate: SUB Originate
400     COM Ts
410     PRINT "Instructions: Turn the phone on now"
420     PRINT "When the phone shows service, dial a number and press SEND"
430     OUTPUT Ts;"STAT:CALLP:PTR 32" ! Latch "Connect" LED
440     OUTPUT Ts;"STAT:CALLP:NTR 0" ! Ignore All Negative Transitions
450     OUTPUT Ts;"*CLS"! Clear Status Event Registers
460     REPEAT
470         OUTPUT Ts;"*ESR?::STAT:CALLP:EVENT?"
480         ENTER Ts;Esr,Register
490         IF Esr<>0 THEN
500             PRINT "Error during origination"
510             STOP
520         END IF
530         WAIT .2 ! Gives the testset time to service other processes
540     UNTIL Register ! Returns 0 until one of the bits is set
550     PRINT "Origination Successful!"
560 SUBEND
```

```
570 Enable_pcs: SUB Enable_pcs
580 COM Ts
590 OUTPUT Ts;"CALLP:DCCH:PCS:MODE 'ON'"
600 OUTPUT Ts;"CALLP:DCCH:VOC 'ACELP'"
610 OUTPUT Ts;"CALLP:DCCH:MSCapability:BAND 'US PCS'"
620 SUBEND
630 Setup_acc: SUB Setup_acc
640 COM Ts
650 OUTPUT Ts;"CALLP:CSYS 'DCCH'" !Set the System Type to DCCH.
660 OUTPUT Ts;"CALLP:DCCH:CCTY 'ANALOG'" !Select Analog control channel.
670 OUTPUT Ts;"CALLP:DCCH:CCH 325" !Change control chan number as needed.
680 SUBEND
690 Setup_trafchan: SUB Setup_trafchan !Setup AVC channel 777.
700 COM Ts
710 OUTPUT Ts;"CALLP:DCCH:VTYPE 'AVC'" !Go to an Analog Control Channel.
720 OUTPUT Ts;"CALLP:DCCH:AVCHannel:VChannel 777" !AVC number.
730 SUBEND
740 Meas_freqerr: SUB Meas_freqerr !Measure RF Frequency Error
750 COM Ts
760 OUTPUT Ts;"MEAS:RFR:FREQ:ERR?" !Query the TX Freq Error.
770 ENTER Ts;Freq_err
780 PRINT "RF Frequency Error is ";DROUND(Freq_err,3);"Hz" !Round
781 !the measurement to 3 digits and print the value.
790 SUBEND
800 Meas_fmdev: SUB Meas_fmdev
810 COM Ts
820 OUTPUT Ts;"MEAS:AFR:FM?"
830 ENTER Ts;Fm_dev
840 PRINT "FM Deviation is ";DROUND((Fm_dev/1.E+3),3);"kHz" !Round
841 !the measurement to 3 digits and display in kHz (default=Hz).
850 SUBEND
```



```
860 Meas_affreq: SUB Meas_affreq
870     COM Ts
880     OUTPUT Ts;"Meas:AFR:FREQ?"
890     ENTER Ts;Af_freq
900     PRINT "Audio Frequency is ";DROUND((Af_freq/1.E+3),4);"kHz"
910     SUBEND
920 Meas_txpower: SUB Meas_txpower
930     COM Ts
940     OUTPUT Ts;"MEAS:RFR:POW:UNIT DBM" !Change the RETURNED HP-IB
941         !MEASUREMENT value unit from Watts to dBm.
943     OUTPUT Ts;"MEAS:RFR:POW:DUN DBM" !Change the DISPLAY units
944         !on the test set from the default (Watts) to dBm.
950     OUTPUT Ts;"MEAS:RFR:POW?" !Measure RF power with PCS Interface.
960     ENTER Ts;Tx_pow
970     PRINT "TX Power (Avg) is ";DROUND(Tx_pow,3);"dBm"
980     SUBEND
990 Enable_meas: SUB Enable_meas
1000    COM Ts
1010    OUTPUT Ts;"CALLP:MODE 'MEAS'" !Select Meas on CALL CONTROL screen.
1020    SUBEND
```

## Analog Measurements: Analog Measurements Screen

### Description

This section demonstrates using the analog measurement functions on the ANALOG MEAS screen. The ANALOG MEAS screen is generally used in conjunction with the CALL CONTROL screen. Usually the CALL CONTROL screen is used to set up a call and perform call processing. For making measurements on the voice channel, the display is switched to the ANALOG MEAS screen and the filters, audio inputs, and de-emphasis can be adjusted as needed for making the measurement. When it is necessary to perform more call processing, the CALL CONTROL screen is displayed (which automatically re-configures filters, etc.) and functions like handoffs can be performed.

The ANALOG MEAS screen can also be used to make measurements on a mobile that is in a test mode where the mobile is generating a reverse analog voice channel without using the call processing overhead messages.

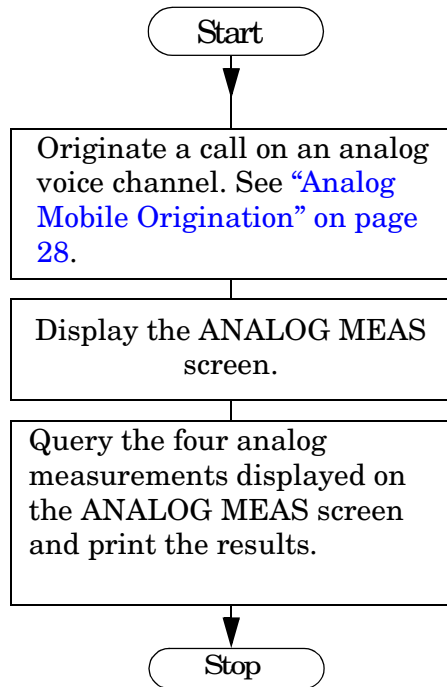
### Test Conditions

- System Type = DCCH
- Control Channel = Analog, Channel Number 321
- RF Amplitude = -50 dBm (default)

## Manual Operation

- Press **PRESET**.
- If a PCS Interface is used, set the PCS Mode field on the CONFIGURE screen to On.
- Display the CALL CONTROL screen.
- Set the System Type to DCCH.
- For PCS mobiles:
  - Set the MS Capab field (DCCH CALL CONFIGURE II) screen to US PCS.
  - Set the Voc: field (CALL CONTROL screen) to match the mobile's vocoder (typically ACELP).
- Set the Cntrl Chan type to Analog. The default channel number is 42; change it as needed for your mobile to find service (Idle).
- In the Traffic Chan Assignment area:
  - Set the Type to AVC.
  - Set the Chan to 777.
- Power on the mobile and wait until it indicates service.
- Dial a number on the mobile and press **SEND** (originate a call).
- The mobile should connect, shown by the lit Connect indicator on the test set.
- Display the ANALOG MEAS screen.
- Make any desired changes to the analyzer settings (arranged below the measurements).
- Read the TX Freq Error and TX Power (Avg) RF measurements, and the SAT tone's FM Deviation and AF Freq AF measurements.

## Automated Test Flowchart



## Example HP BASIC Program

```
10      ! This uses the built-in analog call processing.
20      ! This program implements Active and Origination.
30      ! Monitors the 'Connect' LED to determine if page is successful.
40      ! Monitors ESR to trap errors during the origination.
50      ! Queries the measurements on the ANALOG MEAS screen.
60      ! Prints the measurement results.
70      COM Ts
80      CLEAR SCREEN
90      Ts=714
100     CALL Reset_ts
110     CALL Enable_pcs
120     CALL Setup_acc
130     CALL Set_to_active
140     CALL Setup_trafchan
150     CALL Originate
160     CALL Anlmeas_screen
170     CALL Meas_freqerr
```

```

180 CALL Meas_fmdev
190 CALL Meas_affreq
200 CALL Meas_txpower
210 END
220 Set_to_active: SUB Set_to_active
230 COM Ts
240 OUTPUT Ts;"STAT:CALLP:PTR 1"! Arm Bit 0 of the PTR register
250 OUTPUT Ts;"*CLS"! Clear Status Event Registers
260 OUTPUT Ts;"CALLP:ACTIVE"
270 REPEAT
280 OUTPUT Ts;"STAT:CALLP:EVENT?"
290 ENTER Ts;Active
300 WAIT .2 ! Gives the testset time to service other processes
310 UNTIL Active ! Returns 0 until one of the bits is set
320 SUBEND
330 Reset_ts: SUB Reset_ts
340 COM Ts
350 OUTPUT Ts;"*RST;*OPC?"! Good reset technique
360 ENTER Ts;Done
370 OUTPUT Ts;"DISP ACNT"! Analog Call Control Screen
380 SUBEND
390 !
400 Originate: SUB Originate
410 COM Ts
420 PRINT "Instructions: Turn the phone on now"
430 PRINT "When the phone shows service, dial a number and press SEND"
440 OUTPUT Ts;"STAT:CALLP:PTR 32" ! Latch "Connect" LED
450 OUTPUT Ts;"STAT:CALLP:NTR 0" ! Ignore All Negative Transitions
460 OUTPUT Ts;"*CLS"! Clear Status Event Registers
470 REPEAT
480 OUTPUT Ts;"*ESR?;:STAT:CALLP:EVENT?"
490 ENTER Ts;Esr,Originate
500 IF Esr<>0 THEN
510 PRINT "Error during origination"
520 STOP
530 END IF

```

```
540      WAIT .2 ! Gives the testset time to service other processes
550      UNTIL Originate ! Returns 0 until one of the bits is set
560      PRINT "Origination Successful!"
570      SUBEND
580 Enable_pcs:  SUB Enable_pcs
590      COM Ts
600      OUTPUT Ts;"CALLP:DCCH:PCS:MODE 'ON'"
610      OUTPUT Ts;"CALLP:DCCH:VOC 'ACELP'"
620      OUTPUT Ts;"CALLP:DCCH:MSCapability:BAND 'US PCS'"
630      SUBEND
640 Setup_acc:  SUB Setup_acc
650      COM Ts
660      OUTPUT Ts;"CALLP:CSYS 'DCCH'" !Set the System Type to DCCH.
670      OUTPUT Ts;"CALLP:DCCH:CCTY 'ANALOG'" !Select Analog control channel.
680      OUTPUT Ts;"CALLP:DCCH:CCH 325" !Change control channel number as
needed.
690      SUBEND
700 Setup_trafchan:  SUB Setup_trafchan !Setup AVC channel 777.
710      COM Ts
720      OUTPUT Ts;"CALLP:DCCH:VTYPE 'AVC'" !Go to an Analog Control Channel.
730      OUTPUT Ts;"CALLP:DCCH:AVChannel:VChannel 777" !AVC number.
740      SUBEND
750 Meas_freqerr:  SUB Meas_freqerr !Measure RF Frequency Error
760      COM Ts
770      OUTPUT Ts;"MEAS:RFR:FREQ:ERR?" !Query the TX Freq Error.
780      ENTER Ts;Freq_err
790      PRINT "RF Frequency Error is ";Freq_err;"Hz"
800      SUBEND
810 Meas_fmdev:  SUB Meas_fmdev
820      COM Ts
830      OUTPUT Ts;"MEAS:AFR:FM?"
840      ENTER Ts;Fm_dev
850      PRINT "FM Deviation is ";Fm_dev;"Hz"
860      SUBEND
```

```
870 Meas_affreq: SUB Meas_affreq
880     COM Ts
890     OUTPUT Ts;"Meas:AFR:FREQ?"
900     ENTER Ts;Af_freq
910     PRINT "Audio Frequency is ";Af_freq;"Hz"
920     SUBEND
930 Meas_txpower: SUB Meas_txpower
940     COM Ts
950     OUTPUT Ts;"MEAS:RFR:POW?"
960     ENTER Ts;Tx_pow
970     PRINT "TX Power (Avg) is ";Tx_pow;"Watts"
980     SUBEND
990 Anlmeas_screen: SUB Anlmeas_screen
1000    COM Ts
1010    OUTPUT Ts;"DISP CMEasure" !Display Analog Measurement screen.
1020    SUBEND
```

## Digital (TDMA) Call Processing

### Description

This section demonstrates how to handoff calls between traffic/voice channel types. In the example, handoffs are made between an analog voice channel to a cell band digital traffic channel, then to a PCS band digital traffic channel, and back to an analog voice channel. The call is then released. This simulates what might happen when a driver moves between areas with systems that support different levels of digital call processing abilities.

### Test Conditions

- Phone = Connect Mode
- System Type = DCCH
- Control Channel = Analog, Channel Number 321
- RF Amplitude = -50 dBm (default)



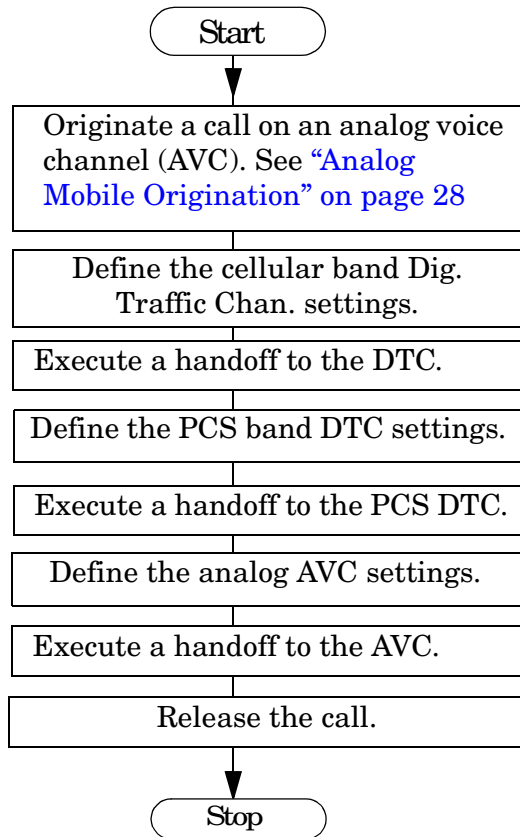
## Manual Operation

- Originate a call (see “[Analog Mobile Origination](#)” on page 28) to get the mobile on an analog voice channel. If you turn up the test set’s volume with the mobile close to the test set, you will probably hear the “squealing” SAT tone feedback through the test set’s speaker.
- Change the fields under `Voice Chan Assignment`<sup>1</sup> as follows:
  - `Type:` = DTC
  - `Band:` = Cellular
  - `Chan:` = 789
  - `Voc:` = ACELP
- Select the `Handoff` field. The `Connect` indicator will go out, the `Access` indicator should light for a second or two and then go out, and the `Connect` indicator should be lit again. The mobile is now on a cellular band digital traffic channel. If you turn up the test set’s volume, you will hear a “motor boating” or buzzing sound through the test set’s speaker. The sound is the digital traffic channel being routed through the test set’s FM discriminator.
- Change these fields under `Traffic Chan Assignment` as follows:
  - `Band:` = US PCS
  - `Channel:` = 1099
- Select the `Handoff` field to tell the mobile to go to the new PCS band digital traffic channel assignment. As before, the `Connect` indicator should be lit after a few seconds if the handoff was successful.
- Change these fields under `Traffic Chan Assignment` as follows:
  - `Type:` = AVC
  - `Channel:` = 777
- Select the `Handoff` field to tell the mobile to go back to an analog voice channel.
- Select the `Release` field (on the test set) to end the call. The `Active` indicator should be lit after the call is released.

---

1. The label “Voice Channel Assignment” is displayed because the `Type:` field was set to AVC when the call was originated (to differentiate a digital traffic channel from an analog voice channel). When you change the `Type:` field from AVC to DTC, the label over this section of fields changes from “Voice Channel Assignment” to “Traffic Channel Assignment”.

## Automated Test Flowchart



## Example HP Basic Program

```
10    ! This uses the built-in analog call processing.
20    ! This program implements Active and Origination.
30    ! Monitors the 'Connect' LED to determine if page
40    ! and Handoffs are successful between AVC, DTC, and PCS DTC.
50    ! Monitors ESR to trap errors during the origination.
60    COM Ts
70    CLEAR SCREEN
80    Ts=714
90    CALL Reset_ts
100   CALL Enable_pcs
110   CALL Setup_acc
120   CALL Set_to_active
130   CALL Setup_avc
140   CALL Originate
150   CALL Setup_dtc
```

```

160 CALL Handoff
170 CALL Setup_pcs
180 CALL Handoff
190 CALL Setup_avc
200 CALL Handoff
210 CALL Release
220 END
230 Set_to_active: SUB Set_to_active
240     COM Ts
250     OUTPUT Ts;"STAT:CALLP:PTR 1"! Arm Bit 0 of the PTR register
260     OUTPUT Ts;"*CLS"! Clear Status Event Registers
270     OUTPUT Ts;"CALLP:ACTIVE"
280     REPEAT
290         OUTPUT Ts;"STAT:CALLP:EVENT?"
300         ENTER Ts;Active
310         WAIT .2 ! Gives the testset time to service other processes
320         UNTIL Active ! Returns 0 until one of the bits is set
330     SUBEND
340 Reset_ts: SUB Reset_ts
350     COM Ts
360     OUTPUT Ts;"*RST;*OPC?"! Good reset technique
370     ENTER Ts;Done
380     OUTPUT Ts;"DISP ACNT"! Analog Call Control Screen
390     SUBEND
400 !
410 Originate: SUB Originate
420     COM Ts
430     PRINT "Instructions: Turn the phone on now"
440     PRINT "When the phone shows service, dial a number and press SEND"
450     OUTPUT Ts;"STAT:CALLP:PTR 32" ! Latch "Connect" LED
460     OUTPUT Ts;"STAT:CALLP:NTR 0" ! Ignore All Negative Transitions
470     OUTPUT Ts;"*CLS"! Clear Status Event Registers
480     REPEAT
490         OUTPUT Ts;"*ESR?::STAT:CALLP:EVENT?"
500         ENTER Ts;Esr,Originate
510         IF Esr<>0 THEN

```

## Making Measurements

### Digital (TDMA) Call Processing

```
520         PRINT "Error during origination"
530         STOP
540     END IF
550     WAIT .2 ! Gives the testset time to service other processes
560     UNTIL Originate ! Returns 0 until one of the bits is set
570     PRINT "Origination Successful!"
580 SUBEND
590 Enable_pcs:  SUB Enable_pcs
600     COM Ts
610     OUTPUT Ts;"CALLP:DCCH:PCS:MODE 'ON'"
620     OUTPUT Ts;"CALLP:DCCH:VOC 'ACELP'"
630     OUTPUT Ts;"CALLP:DCCH:MSCapability:BAND 'US PCS'"
640     SUBEND
650 Setup_acc:  SUB Setup_acc
660     COM Ts
670     OUTPUT Ts;"CALLP:CSYS 'DCCH'" !Set the System Type to DCCH.
680     OUTPUT Ts;"CALLP:DCCH:CCTY 'ANALOG'" !Select Analog control channel.
690     OUTPUT Ts;"CALLP:DCCH:CCH 321" !Change control chan number as needed.
700     SUBEND
710 Setup_avc:  SUB Setup_avc !Setup AVC channel 777.
720     COM Ts
730     OUTPUT Ts;"CALLP:DCCH:VTYPE 'AVC'" !Go to an Analog Control Channel.
740     OUTPUT Ts;"CALLP:DCCH:AVCHannel:VChannel 777" !AVC number.
750     SUBEND
760 Setup_dtc:  SUB Setup_dtc !Setup DTC channel 789.
770     COM Ts
780     OUTPUT Ts;"CALLP:DCCH:VTYPE 'DTC'" !Go to a Digital Traffic Channel.
790     OUTPUT Ts;"CALLP:DCCH:VTYPE:BAND 'Cellular'" !Select Cellular band.
800     OUTPUT Ts;"CALLP:DCCH:DTCHannel:TChannel 789" !DTC number.
820     SUBEND
830 Setup_pcs:  SUB Setup_pcs!Setup a PCS band DTC channel 1099.
840     COM Ts
850     OUTPUT Ts;"CALLP:DCCH:VTYPE:BAND 'US PCS'" !Select PCS band.
860     OUTPUT Ts;"CALLP:DCCH:DTCHannel:TChannel 1099" !PCS DTC number.
870     SUBEND
```

```

880 Handoff: SUB Handoff !Select handoff function & check for Connect state.
890     COM Ts
900     OUTPUT Ts;"STAT:CALLP:PTR 32"
910     OUTPUT Ts;"STAT:CALLP:NTR 0"
920     OUTPUT Ts;"*CLS"
930     OUTPUT Ts;"CALLP:HANDoff"
940     REPEAT
950         OUTPUT Ts;"*ESR?;:STAT:CALLP:EVENT?"
960         ENTER Ts;Esr,Connect
970         WAIT .2
980     UNTIL Connect OR Esr
990     IF Esr THEN
1000    PRINT "Call failed to handoff properly"
1010    STOP
1020    END IF
1030    PRINT "HANDOFF SUCCESSFUL!"
1040    SUBEND
1050 Release: SUB Release
1060    COM Ts
1070    PRINT "Attempting to release the call..."
1080    OUTPUT Ts;"STAT:CALLP:PTR 1" !Latch "Active" indicator (LED).
1090    OUTPUT Ts;"STAT:CALLP:NTR 0" !Ignore negative transitions.
1100    OUTPUT Ts;"*CLS" !Clear the Even Status Registers (ESR).
1110    OUTPUT Ts;"CALLP:RELease" !Release the call.
1120    REPEAT
1130        OUTPUT Ts;"*ESR?;:STAT:CALLP:EVENT?"
1140        ENTER Ts;Esr,Release
1150        IF Esr<>0 THEN
1160            PRINT "Error during Release"
1170            STOP
1180        END IF
1190        WAIT .2 !Wait to test set processing.
1200        UNTIL Release !Returns 0 until one of the bits is set.
1210        PRINT "Mobile has been released successfully."
1220        SUBEND

```

## TDMA Transmitter Measurements

### Description

The mobile's transmitter is modulated with random data. A burst (or 10 bursts) is captured and analyzed by the test set. The following measurement results are returned:

- **Droop:** Burst amplitude over time. It is the ratio (dB) between the amplitude at the beginning of the burst and the amplitude at the end of the burst.
- **Frequency Error:** Frequency difference between the mobile's carrier and the Test Set's receive frequency. It is derived from accumulated phase error measured as part of the EVM measurement.
- **Origin Offset:** Ratio of unmodulated carrier feedthrough to the magnitude of the modulated carrier. An ideal modulator, one that is perfectly balanced, would have no carrier feedthrough. The measurement is called origination offset because the IQ constellation diagram of a signal with carrier feedthrough would show the origin offset from zero.
- **Error Vector Magnitude (EVM):** Overall Modulation accuracy. It is a measure, in %, of how close the mobile transmitter's modulation vector is to the ideal modulation vector. A perfect modulator would have zero EVM. The IS-137 standard for EVM is a maximum of 12.5%.
- **Magnitude Error:** Modulation amplitude accuracy. It is a measure, in %, of how close the magnitude of the mobile transmitter's modulation vector is to the ideal vector's magnitude.
- **Phase Error:** Modulation phase accuracy. It is a measure, in degrees, of how close the phase of the mobile transmitter's modulation vector is to the ideal vector's phase.

This test corresponds to the IS-137 Modulation Type and Accuracy Test (3.3.2.1).

### Test Conditions

Mobile = Test Mode.

Transmitter measurements can be made either on the CALL CONTROL screen with the mobile on a call, or on the DIGITAL MEASUREMENTS screen with the mobile transmitting in test mode.

The example procedure assumes the mobile is placed in the test mode, eliminating the need to wait for call processing to establish an active DTC.

## Manual Operation

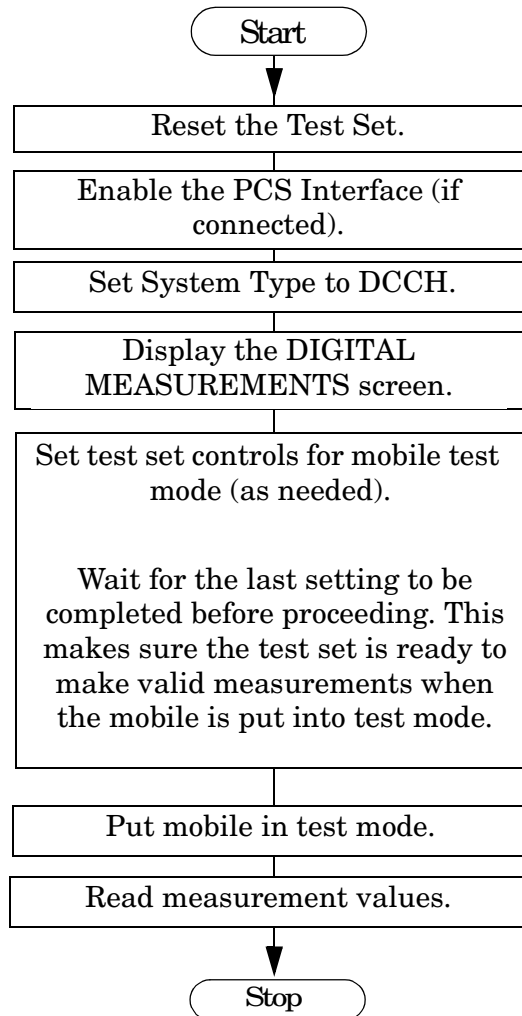
- Press **PRESET**.
- If a PCS Interface is used, set the `PCS Mode` field on the `CONFIGURE` screen to `On`.
- Display the `CALL CONTROL` screen.
- Set the `System Type` to `DCCH`.
- Display the `DIGITAL MEASUREMENTS` screen. Note: Error messages warning you about correlation and synchronization problems appear until your mobile is in test mode and synchronized with the test set.
- Set the `Traffic Chan` field to match the channel number your mobile uses in test mode.
- If your mobile does not use `Slot 1` and `DVCC 1` in test mode, change these test set settings to match your mobile's needs.
- Put your mobile in its test mode (making sure to match the `Traffic Chan` setting).
- Read the `EVM`, `Frequency Error`, and `Peak EVM` measurements.
- Change the `Dig Meas` field from `EVM 1` to `EVM 10` to display the Error Vector Magnitude for 10 bursts. Since the measurement is now made on groups of 10 bursts (instead of after every burst), the measurement value changes more slowly than for `EVM 1`.
- Select the `EVM` measurement heading to display the following list of additional measurements to choose from: `Peak EVM`, `Phase Error`, `Magnitude Error`, `Origin Offset`, `Droop`, `Sync Location`, `Maximum Absolute ADC level`. Refer to the *HP 83206A TIA/EIA 136 Cellular Adapter User's Guide* for descriptions of these measurements.
- Change the `Dig Meas` field from `EVM 10` to `Avg Power` to display the `TX Power (Avg)` measurement. This is the average RF power in Watts (W).

Don't confuse the `TX Power(Avg) [Watts]` measurement you just selected with the `TX Power [dB]` measurement that is displayed when measuring `EVM`.

- The `TX Power(Avg) [Watts]` measurement indicates an absolute signal level; what you typically would expect to measure with a power meter. This is the measurement you would normally use to measure transmitter power.
- The `TX Power [dB]` measurement displayed while measuring `EVM` is *relative* to the level of an external reference signal that you must provide. The main benefit to this measurement is its ability to measure very low level signals. However, you must run an internal calibration program and provide a TDMA signal of a known level to calibrate the measurement before any power measurements can be made.

Refer to the *HP 83206A TIA/EIA 136 Cellular Adapter User's Guide*, or the product note *Power Measurements using HP 8920B Solutions for AMPS, NAMPS, and TDMA Mobile Phones* (HP p/n 5966-2557E), for more information on power measurements.

## Automated Test Flowchart





## Example HP BASIC Program

```

10    ! This program shows how to make TDMA transmitter
20    ! quality measurements on a digital traffic channel.
30    ! with the mobile in test mode.
40    COM Ts
50    Ts=714
60    CLEAR SCREEN
70    Initialize_ts
80    Enable_pcs
90    Init_dcch
100   Disp_dig_meas
110   Setup_tst_mode
120   DISP "Put the mobile in test mode, then press CONTINUE."
130   PAUSE
140   Meas_tx_qual
150   DISP "Program Ended"
160   END
170 !
180 Initialize_ts: SUB Initialize_ts
190     ! Reset Test Set
200     COM Ts
210     CLEAR Ts ! Device clear to clean up any pending HP-IB
220     OUTPUT Ts;"*RST;*OPC?" ! Good reset technique
230     ENTER Ts;Done
240     OUTPUT Ts;"TRIG:MODE:RETR REP"! Repetitive Trigger
250   SUBEND
260 !
270 Init_dcch: SUB Init_dcch
280     COM Ts
290     OUTPUT Ts;"DISP ACNT" ! Display analog Call Control screen.
300     OUTPUT Ts;"CPR:CSYS `DCCH`" ! Set System Type to DCCH.
310   SUBEND
320 !

```

## Making Measurements

### TDMA Transmitter Measurements

```
330 Meas_tx_qual: SUB Meas_tx_qual
340     ! This routine measures a Digital Traffic Channel
350     ! for Droop, Frequency Error, Origin Offset, Magnitude
360     ! Error, Phase Error, and EVM.
370     COM Ts
380     ON TIMEOUT 7,10 GOTO Error_handler
390     OUTPUT Ts;"MEAS:RESet" !Reset measurement process in case
400     ! squelch interupt overflow occurs while putting mobile
410     ! in test mode.
420     OUTPUT Ts;"MEAS:DCCH:MTYPE `EVM 1`"
430     OUTPUT Ts;"TRIG:MODE:RETR SINGLE" ! Single Trigger
440     OUTPUT Ts;"TRIG" ! Trigger all measurements
450     OUTPUT Ts;"MEAS:DCCH:EVMM:DROOP?"
460     ENTER Ts;Droop
470     OUTPUT Ts;"MEAS:DCCH:EVMM:FERR?"
480     ENTER Ts;Freq_error
490     OUTPUT Ts;"MEAS:DCCH:EVMM:OOFF?"
500     ENTER Ts;Origin_offset
510     OUTPUT Ts;"MEAS:DCCH:EVMM:MERR?"
520     ENTER Ts;Mag_error
530     OUTPUT Ts;"MEAS:DCCH:EVMM:PERR?"
540     ENTER Ts;Phase_error
550     OUTPUT Ts;"MEAS:DCCH:EVMM:EVM?"
560     ENTER Ts;Evm1
570     OUTPUT Ts;"MEAS:RFfrequency:POWer?"
580     ENTER Ts;Power
590     PRINT "Droop          ",PROUND(Droop,-3),"dB"
600     PRINT "Freq Error  ",PROUND(Freq_error,-3),"Hz"
610     PRINT "Origin Offset",PROUND(Origin_offset,-3),"dB"
620     PRINT "Magnitude Error",PROUND(Mag_error,-3),"%"
630     PRINT "Phase Error",PROUND(Phase_error,-3),"deg"
640     PRINT "EVM 1 Burst",PROUND(Evm1,-3),"%"
650     PRINT "Average Power",PROUND(Power,-3),"Watts"
660     GOTO Exit_sub
```

```

670 Error_handler: !
680     PRINT "Unable to read Tx Quality Measurement"
690 Exit_sub: !
700     OUTPUT Ts;"TRIG:MODE:RETR REP"! Repetitive Trigger
710 SUBEND
720 Enable_pcs: SUB Enable_pcs
730     COM Ts
740     OUTPUT Ts;"CALLP:DCCH:PCS:MODE `ON`"
750 SUBEND
760 Disp_dig_meas: SUB Disp_dig_meas
770     COM Ts
780     OUTPUT Ts;"DISP DME" !Display the DIGITAL MEASUREMENTS screen.
790 SUBEND
800 Setup_tst_mode: SUB Setup_tst_mode !Setup test mode conditions.
810     COM Ts
820     INTEGER Settled
830     Slot_val=1 !Enter the Slot number to use for test mode setup.
840     ! The following default values may need to be changed to match the
850     ! mobile's test mode settings. (Examples use default values)
860     OUTPUT Ts;"CALLP:DCCH:DTCH:TChannel 2" !Set Traffic Chan number.
870     OUTPUT Ts;"CALLP:DCCH:DTCH:DVCCCode 1" !Set value for DVCC field.
880     OUTPUT Ts;"CALLP:DCCH:DTCH:SLOT ";Slot_val !Set value for Slot
field.
890 LOOP
900     OUTPUT Ts;"CALLP:DCCH:DTCH:SLOT?" !Query the Slot value
910     ENTER Ts;Settled !to see if it has changed yet.
920     EXIT IF Settled=Slot_val !Exit loop if Slot command executed.
930 END LOOP
940 SUBEND
    
```

## TDMA Receiver Sensitivity: BER & WER

### Description

Two tests measure the RF Sensitivity of the mobile receiver in digital mode: Bit Error Rate (BER) and Word Error Rate (WER). In both measurements, the test set's RF carrier is modulated by a bit stream. The mobile demodulates the signal and loops the bits back to the transmitter. The test set demodulates the mobile's signal and compares the data sent to the mobile with the data transmitted back from the mobile. Amplitude is set to a low level and a high level (overload condition) for each measurement.

- For BER, a pseudo-random bit stream is used on a Digital Traffic Channel (DTC) with the mobile in test mode. Bit error rate (BER) is calculated by taking the ratio of bit error to total bits and converting to a percentage (<3% specified in standard).

The test set can be set to create a signal with a known BER to test Mobile Assisted Hand Off (MAHO). This is done by setting the % BIT ERROR field (on the DCCH CALL CONFIGURE screen) to the desired value *after* a call has been connected on a DTC. MAHO must be measured with the mobile on an active traffic channel.

- For DCCH WER, data is sent in the Broadcast Control Channel (BCCH) information. This measurement must be made with the mobile in test mode.
- For DTC WER, a pseudo-random bit stream is used on a DTC using SPEECH, SACCH, or FACCH data words. This measurement must be made with the mobile in test mode.

This test corresponds to the IS-137, RF Sensitivity Test (2.3.2.1).

This test is similar to the Co-channel Performance test (2.3.2.6), where a second signal source is used to test the receiver's ability to receive a modulated signal in the presence of a second signal on the same channel frequency (determined by measuring BER & WER).

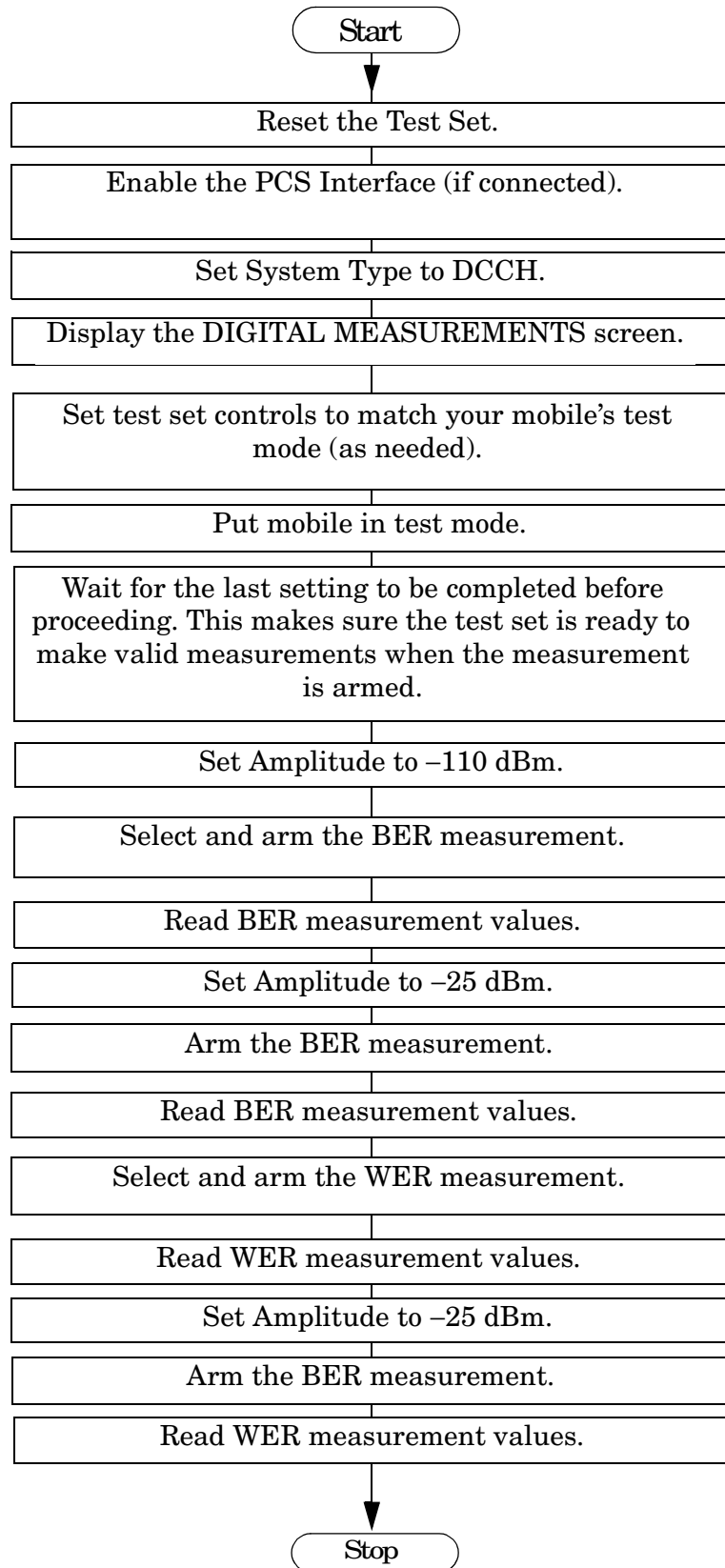
### Test Conditions

- Phone = Test Mode
- RF Amplitude = -110 dBm & -25 dBm(BER), -111 dBm & -25 dBm (WER).

## Manual Operation

- Press **PRESET**.
- If a PCS Interface is used, set the `PCS Mode` field on the `CONFIGURE` screen to `On`.
- Display the `CALL CONTROL` screen.
- Set the `System Type` to `DCCH`.
- Display the `DIGITAL MEASUREMENTS` screen. Note: Error messages warning you about correlation and synchronization problems appear until your mobile is in test mode and synchronized with the test set.
- Set the `Traffic Chan` field to match the channel number your mobile uses in test mode.
- If your mobile does not use (time)Slot 1 and DVCC 1 in test mode, change these fields as needed on the test set.
- Put your mobile in its test mode.
- Change the `Dig Meas` field from `EVM 1` to `BER`.
- Set the `Amplitude` to `-110 dBm`.
- Select `Arm` (under the `Dig Meas` field) to make the measurement.
- Read low level Loopback BER in %.
- Set the `Amplitude` to `-25 dBm`.
- Select `Arm`.
- Read high level Loopback BER in %.
- Change the `Dig Meas` field from `BER` to `DTC WER`.
- Select `Arm`.
- Read high level Loopback WER in %.
- Select `Arm`.
- Set the `Amplitude` to `-111 dBm`.
- Read low level Loopback WER in %.

### Automated Test Flowchart



## Example HP BASIC Program

```
10    ! This program shows how to make TDMA receiver
20    ! quality measurements on a digital traffic channel.
30    ! with the mobile in test mode.
40    COM Ts
50    Ts=714
60    CLEAR SCREEN
70    Initialize_ts
80    Enable_pcs
90    Init_dcch
100   Disp_dig_meas
110   Setup_tst_mode
120   DISP "Put the mobile in test mode, then press CONTINUE."
130   PAUSE
140   Ber_ampl_low
150   Meas_ber
160   Ampl_high
170   Meas_ber
180   Meas_wer
190   Wer_ampl_low
200   Meas_wer
210   DISP "Program Ended"
220   END
230 !
240 Initialize_ts: SUB Initialize_ts
250     ! Reset Test Set
260     COM Ts
270     CLEAR Ts ! Device clear to clean up any pending HP-IB
280     OUTPUT Ts;"*RST;*OPC?" ! Good reset technique
290     ENTER Ts;Done
300     OUTPUT Ts;"TRIG:MODE:RETR REP"! Repetitive Trigger
310   SUBEND
```

```
320 Init_dcch: SUB Init_dcch
330     COM Ts
340     OUTPUT Ts;"DISP ACNT" ! Display analog Call Control screen.
350     OUTPUT Ts;"CPR:CSYS `DCCH`" ! Set System Type to DCCH.
360 SUBEND
370 Enable_pcs: SUB Enable_pcs
380     COM Ts
390     OUTPUT Ts;"CALLP:DCCH:PCS:MODE `ON`"
400 SUBEND
410 Disp_dig_meas: SUB Disp_dig_meas
420     COM Ts
430     OUTPUT Ts;"DISP DME" !Display the DIGITAL MEASUREMENTS screen.
440 SUBEND
450 Setup_tst_mode: SUB Setup_tst_mode !Setup test mode conditions.
460     COM Ts
470     INTEGER Settled
471     Slot_val=1 !Enter the Slot value to use for test mode setup.
480     ! The following default values may need to be changed to match the
490     ! mobile's test mode settings.
500     OUTPUT Ts;"CALLP:DCCH:DTCH:TChannel 2" !Set Traffic Chan number.
510     OUTPUT Ts;"CALLP:DCCH:DTCH:DVCCCode 1" !Set value for DVCC field.
520     OUTPUT Ts;"CALLP:DCCH:DTCH:SLOT ";Slot_val !Set value for Slot field
540     LOOP
550         OUTPUT Ts;"CALLP:DCCH:DTCH:SLOT?" !Query the slot value to
560         ENTER Ts;Settled !see if the last command has executed yet.
570         EXIT IF Settled=Slot_val !Exit loop if Slot command executed.
580     END LOOP
590 SUBEND
600 Ampl_high: SUB Ampl_high
610     COM Ts
620     OUTPUT Ts;"RFG:AMPL -25 dbm" !Set test set carrier amplitude.
630 SUBEND
640 Ber_ampl_low: SUB Ber_ampl_low
650     COM Ts
660     OUTPUT Ts;"RFG:AMPL -110 dBm" !Set BER low amplitude.
670 SUBEND
```



```
680 Wer_ampl_low: SUB Wer_ampl_low
690   COM Ts
700   OUTPUT Ts;"RFG:AMPL -111 dBm" !Set WER low amplitude.
710   SUBEND
720 Meas_ber: SUB Meas_ber
730   COM Ts
740   ON TIMEOUT 7,10 CALL Failed
750   OUTPUT Ts;"CALLP:DCCH:DMTYpe `BER'" !Select BER measurement.
760   OUTPUT Ts;"MEAS:DCCH:BER:ARM" !Arm the BER measurement.
770   OUTPUT Ts;"MEAS:DCCH:BER:VALue?" !Query the BER.
780   ENTER Ts;Ber_meas
790   OUTPUT Ts;"RFG:AMPL?" !Query the Amplitude setting.
800   ENTER Ts;Amplitude
810   PRINT "BER at ";Amplitude;" dBm = ";PROUND(Ber_meas,-3);"%"
820   SUBEND
830 Meas_wer: SUB Meas_wer
840   COM Ts
850   ON TIMEOUT 7,10 CALL Failed
860   OUTPUT Ts;"CALLP:DCCH:DMTYpe `DTC WER'" !Select DTC WER measurement.
870   OUTPUT Ts;"MEAS:DCCH:WER:ARM" !Arm the WER measurement.
880   OUTPUT Ts;"MEAS:DCCH:WER:VALue?" !Query the WER.
890   ENTER Ts;Wer_meas
900   OUTPUT Ts;"RFG:AMPL?" !Query the Amplitude setting.
910   ENTER Ts;Amplitude
920   PRINT "WER at ";Amplitude;" dBm = ";PROUND(Wer_meas,-3);"%"
930   SUBEND
940 Failed: SUB Failed
950   COM Ts
960   CLEAR 7
970   PRINT "MEASUREMENT FAILED. A valid measurement is not displayed."
980   STOP
990   SUBEND
```

## TDMA Receiver RSSI

### Description

The mobile is presented with various RF carrier levels. It measures the signal level and reports RSSI (Received Signal Strength Indicator) to the Test Set. There is no corresponding IS-137 test.

When displaying RSSI for the current channel, the test set also displays the channel's MAHO Bit Error Rate (BER) and the RSSI for any neighbor channels specified on the DCCH CALL CONFIGURE screen's # Neighbors field.

---

**NOTE** After the RF carrier level is changed, it can take a few seconds for the mobile's power measurement to settle before reporting the *final* RSSI measurement to the test set. Measurements viewed before the settling period is over may not be accurate.

---

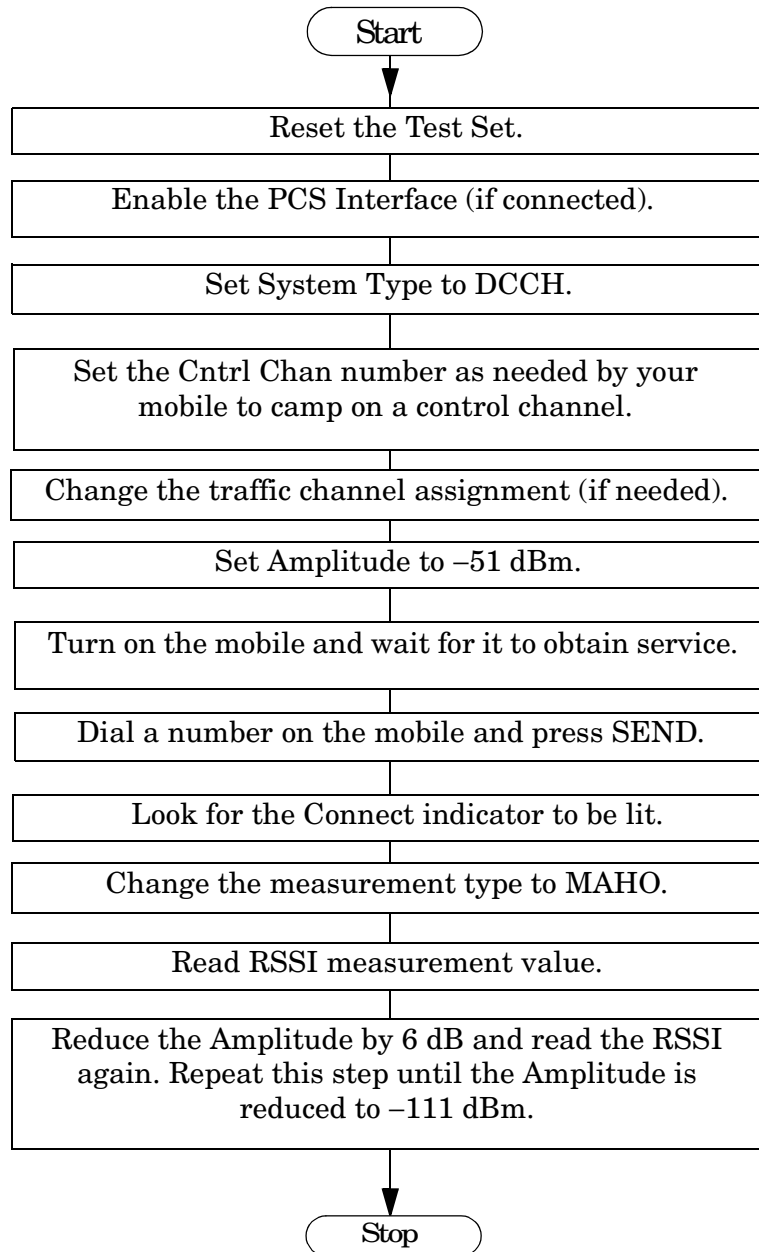
### Test Conditions

- Phone = Connect Mode
- System Type = DCCH
- Traffic Channel = DTC
- RF Amplitude: From -51 dBm to -111 dBm in 6 dB steps.

## Manual Operation

- Press **PRESET**.
- If a PCS Interface is used, set the `PCS Mode` field on the `CONFIGURE` screen to `On`.
- Display the `CALL CONTROL` screen.
- Set the `System Type` to `DCCH`.
- For PCS mobiles:
  - Set the `MS Capab` field (`DCCH CALL CONFIGURE II`) screen to `US PCS`.
  - Set the `Voc:` field (`CALL CONTROL` screen) to match the mobile's vocoder (typically `ACELP`).
- Set the `Cntrl Chan` number to a control channel your mobile will camp on.
- In the `Traffic Chan Assignment` area, set the `Chan` to `777` if your mobile will not work at the default traffic channel assignment (channel 2).
- Power on the mobile and wait until it indicates service.
- Dial a number on the mobile and press **SEND** (originate a call).
- The mobile should connect, shown by the lit `Connect` indicator on the test set.
- Change the `Display` field from `Data` to `Meas`.
- Change the `Display` setting from `EVM1` to `MAHO`.
- Read the `RSSI-Curr Chan dBm` value.
- Change the `Amplitude` to `-51 dBm` and read the `RSSI` value.
- Decrease the `Amplitude` in 6 dB steps until the level is down to `-111 dBm`, reading the `RSSI` value at each amplitude change.

## Automated Test Flowchart



## Example HP BASIC Program

```

10  ! This uses the built-in digital call processing to measure RSSI.
20  ! This program implements Active and Origination.
30  ! Monitors the 'Connect' LED to determine if page is successful.
40  ! Monitors ESR to trap errors during the origination.
50  COM /Settings/Ts,Amplitude
60  CLEAR SCREEN
70  Ts=714
80  Amplitude=-51
90  CALL Reset_ts
100 CALL Enable_pcs
110 CALL Setup_dcch
120 CALL Set_to_active
130 CALL Setup_trafchan
140 CALL Originate
150 Setup_rssi
160 Meas_rssi
170 END

180 Set_to_active: SUB Set_to_active
190   COM /Settings/Ts,Amplitude
200   OUTPUT Ts;"STAT:CALLP:PTR 1"! Arm Bit 0 of the PTR register
210   OUTPUT Ts;"*CLS"! Clear Status Event Registers
220   OUTPUT Ts;"CALLP:ACTIVE"
230   REPEAT
240     OUTPUT Ts;"STAT:CALLP:EVENT?"
250     ENTER Ts;Register
260     WAIT .2 ! Gives the testset time to service other processes
270     UNTIL Register ! Returns 0 until one of the bits is set
280   SUBEND

290 Reset_ts: SUB Reset_ts
300   COM /Settings/Ts,Amplitude
310   OUTPUT Ts;"*RST;*OPC?"! Good reset technique
320   ENTER Ts;Done
330   OUTPUT Ts;"DISP ACNT"! Analog Call Control Screen
340   SUBEND

```

```
350 !
360 Originate: SUB Originate
370     COM /Settings/Ts,Amplitude
380     PRINT "Instructions: Turn the phone on now"
390     PRINT "When the phone shows service, dial a number and press SEND"
400     OUTPUT Ts;"STAT:CALLP:PTR 32" ! Latch "Connect" LED
410     OUTPUT Ts;"STAT:CALLP:NTR 0" ! Ignore All Negative Transitions
420     OUTPUT Ts;"*CLS"! Clear Status Event Registers
430     REPEAT
440         OUTPUT Ts;"*ESR?;:STAT:CALLP:EVENT?"
450         ENTER Ts;Esr,Register
460         IF Esr<>0 THEN
470             PRINT "Error during origination"
480             STOP
490         END IF
500         WAIT .2 ! Gives the testset time to service other processes
510     UNTIL Register ! Returns 0 until one of the bits is set
520     PRINT "Origination Successful!"
530 SUBEND
540 Enable_pcs: SUB Enable_pcs
550     COM /Settings/Ts,Amplitude
560     OUTPUT Ts;"CALLP:DCCH:PCS:MODE 'ON'"
570     OUTPUT Ts;"CALLP:DCCH:VOC 'ACELP'"
580     OUTPUT Ts;"CALLP:DCCH:MSCapability:BAND 'US PCS'"
590     SUBEND
600 Setup_dcch: SUB Setup_dcch
610     COM /Settings/Ts,Amplitude
620     OUTPUT Ts;"CALLP:CSYS 'DCCH'" !Set the System Type to DCCH.
630     OUTPUT Ts;"CALLP:DCCH:CCH 1012" !Change Cntrl Chan number as needed.
640     SUBEND
650 Setup_trafchan: SUB Setup_trafchan !Setup DTC channel 777.
660     COM /Settings/Ts,Amplitude
670     OUTPUT Ts;"CALLP:DCCH:DTCH:TChannel 777" !DTC number.
680     SUBEND
```

```
690 Setup_rssi: SUB Setup_rssi
700     COM /Settings/Ts,Amplitude
710     OUTPUT Ts;"CALLP:DCCH:DMODE `Meas`" !Select Measurements display.
720     OUTPUT Ts;"CALLP:DCCH:MTYPE `MAHO`" !Select the MAHO measurement.
730     SUBEND

740 Meas_rssi: SUB Meas_rssi
750     COM /Settings/Ts,Amplitude
760     LOOP
770     OUTPUT Ts;"CALLP:DCCH:AMPLitude ";VAL$(Amplitude)
780     WAIT 3 !Wait for RSSI measurement to settle in the mobile.
790     OUTPUT Ts;"MEAS:DCCH:MAHandoff:CRSStrength?"
800     ENTER Ts;Rssi_val
810     PRINT "RSSI at ";Amplitude;" dBm =" ;Rssi_val
820     Amplitude=Amplitude-6
830     EXIT IF Amplitude=-117
840     END LOOP
850     PRINT "Measurements Completed."
860     SUBEND
```

## Testing Message Waiting Indicator Operation

### Description

Message Waiting Indicator (MWI) alerts the mobile that Voice, Short Message Service, or Fax messages are waiting for attention. When the test set sends the message, it reports whether the mobile sent the correct response. The mobile alerts the user that a message (or messages) is waiting. Messages can be sent on a DTC (in the connect mode) or on a DCCH with the mobile having found service (“camped”).

### Test Conditions

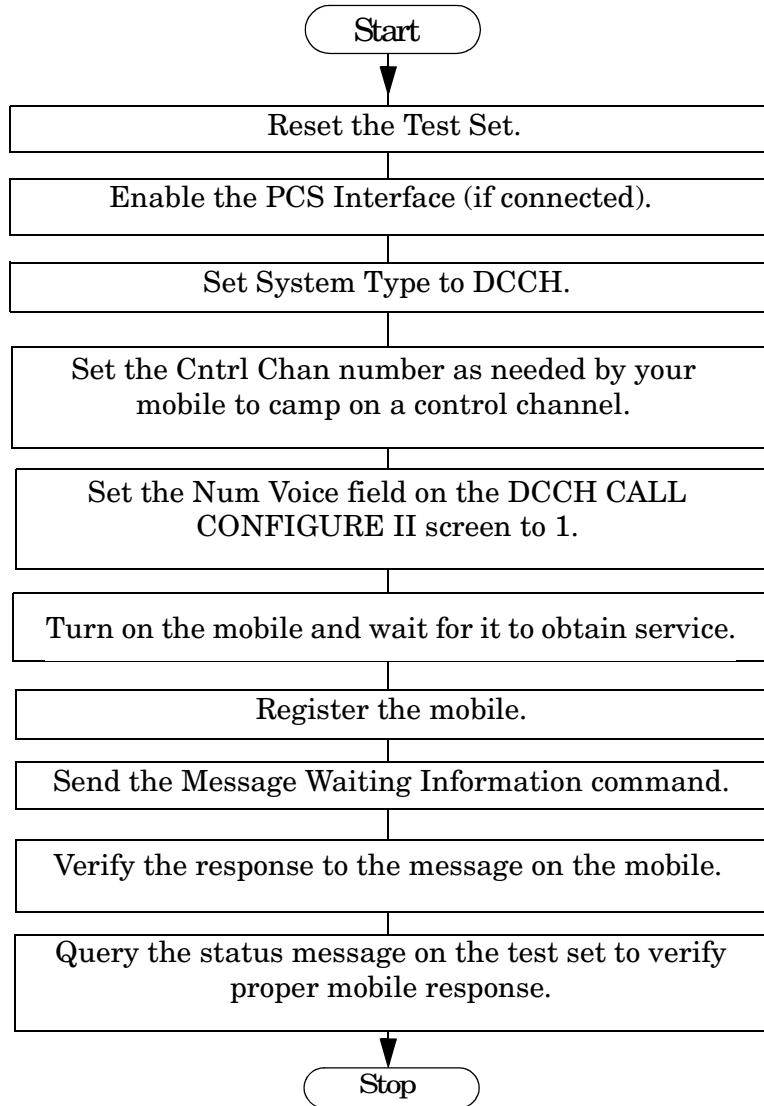
- System Type = DCCH
- Control Channel = Digital, Channel number as needed by your mobile.
- Phone = Camping on the DCCH (not connected).
- RF Amplitude = -50 dBm



## Manual Operation

- Press **PRESET**.
- If a PCS Interface is used, set the `PCS Mode` field on the `CONFIGURE` screen to `On`.
- Display the `CALL CONTROL` screen.
- Set the `System Type` to `DCCH`.
- Set the `Cntrl Chan` number to a digital control channel (DCCH) your mobile will camp on.
- Set the `Num Voice` field on the `DCCH CALL CONFIGURE II` screen to `1`. When the MWI command is sent, the phone is told that 1 voice message is waiting.
- Return to the `CALL CONTROL` screen.
- Power on the mobile and wait until it indicates service.
- Select `Register` to register the mobile and automatically enter its phone number into the `MS ID` field.
- Select the `Cntl Order` field and choose `Send MWI`. *This is the default setting, but it must be re-selected to send the command.*
- The mobile should respond to indicate that a voice message is waiting.
- If the mobile correctly processed the command, the test set very briefly displays “MWI Acknowledged Correctly”, and then displays the phone number of the mobile. If the process failed, the message “MWI Failed: Acknowledgment not received” is displayed.

## Automated Test Flowchart



## Example HP BASIC Program

```

10    ! This program implements Analog Registration.
20    ! Monitors the 'Register' LED to determine when
30    ! registration is complete. Configures the Message Waiting
40    ! Information command, sends the MWI command, monitors the
50    ! Active LED to see when the call processing state goes from
60    ! Active to Access (when MWI command is issued) and returns to
70    ! Active before querying to see if the mobile responded correctly.
80    ON TIMEOUT 7,8 CALL Escape !Recover from bus hangup.
90    COM Ts
100   CLEAR SCREEN
110   Ts=714
120   Reset_ts
130   Enable_pcs
140   Setup_dtc
150   Set_to_active
160   PRINT "Instructions: Turn the phone on now."
170   Register_mobile
180   WAIT 3 !Wait for mobile to stabilize before issuing MWI command.
190   Setup_mwi
200   Send_mwi
210   Test_response
220   END
230 Set_to_active: SUB Set_to_active
240     COM Ts
250     OUTPUT Ts;"STAT:CALLP:PTR 1"! Arm Bit 0 of the PTR register
260     OUTPUT Ts;"*CLS"! Clear Status Event Registers
270     OUTPUT Ts;"CALLP:ACTIVE"
280     REPEAT
290       OUTPUT Ts;"STAT:CALLP:EVENT?"
300       ENTER Ts;Register
310       WAIT .2 ! Gives the testset time to service other processes
320       UNTIL Register ! Returns 0 until one of the bits is set
330   SUBEND

```

## Making Measurements

### Testing Message Waiting Indicator Operation

```
340 Reset_ts: SUB Reset_ts
350     COM Ts
360     OUTPUT Ts;"*RST;*OPC?"! Good reset technique
370     ENTER Ts;Done
380     OUTPUT Ts;"DISP ACNT"! Analog Call Control Screen
390     OUTPUT Ts;"CALLP:CSYS `DCCH'" ! Select the TIA/EIA 136 standard.
400     SUBEND
410 Register_mobile: SUB Register_mobile
420     COM Ts
430     OUTPUT Ts;"STAT:CALLP:PTR 0"! Don't latch positive transitions
440     OUTPUT Ts;"STAT:CALLP:NTR 2"! Latch "Register" LED turning off
450     OUTPUT Ts;"*CLS"! Clear Status Event Registers
460     OUTPUT Ts;"CALLP:REGISTER"
470     REPEAT
480         OUTPUT Ts;"*ESR?;;STAT:CALLP:EVENT?"
490         ENTER Ts;Esr,Register
500         WAIT .2 ! Gives the testset time to service other processes
510         UNTIL Register OR Esr ! Returns 0 until one of the bits is set
520         IF Esr THEN
530             PRINT "Error with Registration"
540             STOP
550         ELSE
560             PRINT "Mobile Registration Successful!"
570         END IF
580     SUBEND
590 Enable_pcs: SUB Enable_pcs
600     COM Ts
610     OUTPUT Ts;"CALLP:DCCH:PCS:MODE `ON'"
620     SUBEND
630 Escape: SUB Escape
640     COM Ts
650     CLEAR 7
660     LOCAL Ts
670     PRINT "Query Error or other bus problem occurred."
680     STOP
690     SUBEND
```

```
700 Setup_dtc: SUB Setup_dtc !Setup an digital control channel.
710     COM Ts
720     OUTPUT Ts;"CALLP:CSYS `DCCH`"           !System Type
730     OUTPUT Ts;"CALLP:DCCH:CCH 1012"       !Set Cntrl Chan number as needed.
740     SUBEND
750 Setup_mwi: SUB Setup_mwi
760     COM Ts
770     OUTPUT Ts;"CALLP:DCCH:MWI:NVO 1"      !Set Num Voice field to 1.
780     SUBEND
790 Send_mwi: SUB Send_mwi
800     COM Ts
810     WAIT 3
820     OUTPUT Ts;"CALLP:DCCH:CORD `Send MWI`" !Send MWI command to mobile.
830     SUBEND
840 Test_response: SUB Test_response
850     COM Ts
860     DIM Response_1$[256]
870     OUTPUT Ts;"STAT:CALLP:PTR 1" !Enable pos-going transistion register
880     OUTPUT Ts;"STAT:CALLP:NTR 0" !for the Active indicator to tell when
890     OUTPUT Ts;"*CLS" !the test set has gone from Active, to Access, and
900     REPEAT !back to Active, before reading the result.
910         OUTPUT Ts;"STAT:CALLP:EVENT?"
920         ENTER Ts;Active_again
930         UNTIL Active_again<>0
940     OUTPUT Ts;"CALLP:DCCH:RCDD1?" !Query the mobile's response.
950     ENTER Ts;Response_1$
960     IF Response_1$="" "MWI FAILED:" "" THEN
970     PRINT "Message Waiting FAILED! No mobile acknowledgement."
980     ELSE
990     PRINT "Message Waiting Indicator WORKED! Mobile acknowledged."
1000    END IF
1010    SUBEND
```

## Testing Short Message Service Operation

### Description

Short Message Service is used to send short text messages to a mobile (similar to a pager). When the test set sends the message, it reports whether the mobile sent the correct response. The mobile alerts the user that a message (or messages) is waiting. Messages can be sent on a DTC (in the connect mode) or on a DCCH with the mobile having found service (“camped”).

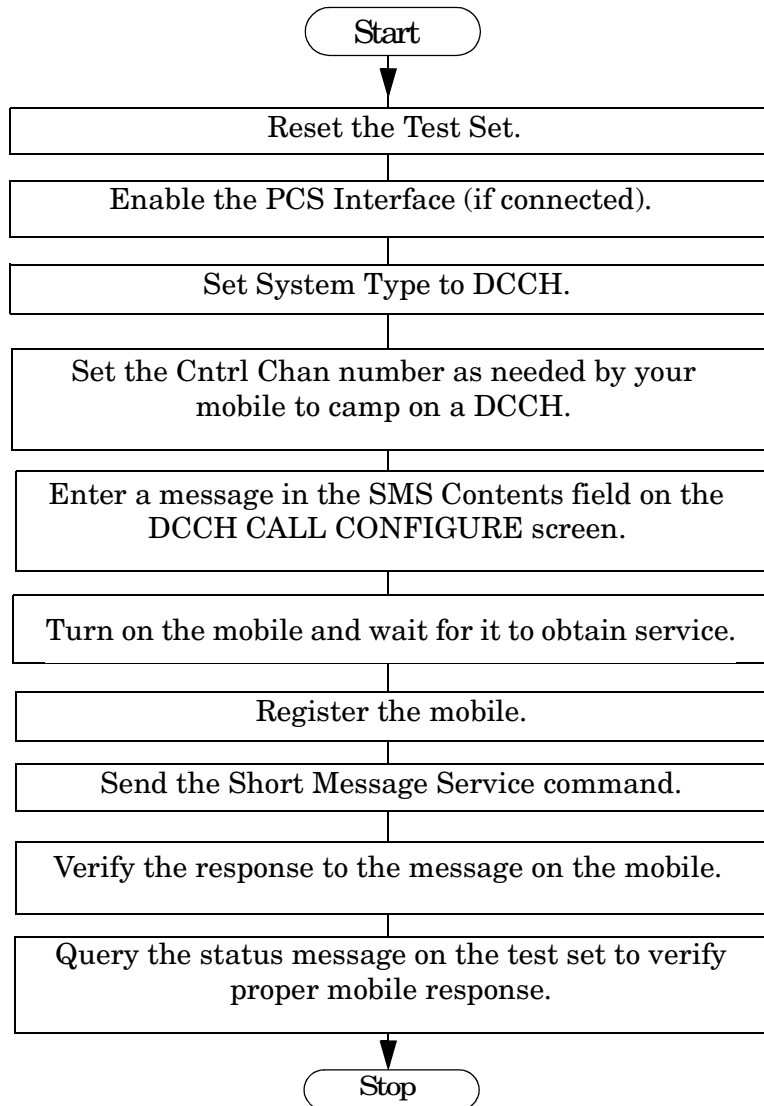
### Test Conditions

- System Type = DCCH
- Control Channel = Digital, Channel number as needed by your mobile.
- Phone = Camping on the DCCH (not connected).
- RF Amplitude = -50 dBm

## Manual Operation

- Press **PRESET**.
- If a PCS Interface is used, set the `PCS Mode` field on the `CONFIGURE` screen to `On`.
- Display the `CALL CONTROL` screen.
- Set the `System Type` to `DCCH`.
- Set the `Cntrl Chan` number to a digital control channel (DCCH) your mobile will camp on.
- Go to the `DCCH CALL CONFIGURE` screen, and select the `SMS Contents` field. Enter several characters to send to the mobile.
- Return to the `CALL CONTROL` screen.
- Power on the mobile and wait until it indicates service.
- Select `Register` to register the mobile and automatically enter its phone number into the `MS ID` field.
- Set the `Cntl Order` field to `Send SMS`.
- The mobile should respond to indicate that an SMS message is waiting.
- If the mobile correctly processed the command, the test set displays “SMS Acknowledged Correctly: MS Indicates RDATA Accepted”, and then displays the phone number of the mobile. If the process failed, the message “SMS Failed: Acknowledgment not received” is displayed.

## Automated Test Flowchart





## Example HP BASIC Program

```

10    ! This program implements Analog Registration.
20    ! Monitors the 'Register' LED to determine when
30    ! registration is complete. Configures the Message Waiting
40    ! Information command, sends the MWI command, monitors the
50    ! Active LED to see when the call processing state goes from
60    ! Active to Access (when MWI command is issued) and returns to
70    ! Active before querying to see if the mobile responded correctly.
80    ON TIMEOUT 7,8 CALL Escape    !Recover from bus hangup.
90    COM Ts
100   CLEAR SCREEN
110   Ts=714
120   Reset_ts
130   Enable_pcs
140   Setup_dtc
150   Set_to_active
160   PRINT "Instructions: Turn the phone on now."
170   Register_mobile
180   WAIT 3    !Wait for mobile to stabilize before issuing MWI command.
190   Setup_sms
200   Send_sms
210   Test_response
220   END
230 Set_to_active: SUB Set_to_active
240     COM Ts
250     OUTPUT Ts;"STAT:CALLP:PTR 1"! Arm Bit 0 of the PTR register
260     OUTPUT Ts;"*CLS"! Clear Status Event Registers
270     OUTPUT Ts;"CALLP:ACTIVE"
280     REPEAT
290       OUTPUT Ts;"STAT:CALLP:EVENT?"
300       ENTER Ts;Register
310       WAIT .2 ! Gives the testset time to service other processes
320       UNTIL Register ! Returns 0 until one of the bits is set
330     SUBEND
340 Reset_ts: SUB Reset_ts

```

## Making Measurements

### Testing Short Message Service Operation

```
350     COM Ts
360     OUTPUT Ts;"*RST;*OPC?"! Good reset technique
370     ENTER Ts;Done
380     OUTPUT Ts;"DISP ACNT"! Analog Call Control Screen
390     OUTPUT Ts;"CALLP:CSYS `DCCH'" ! Select the TIA/EIA 136 standard.
400     SUBEND
410 Register_mobile: SUB Register_mobile
420     COM Ts
430     OUTPUT Ts;"STAT:CALLP:PTR 0"! Don't latch positive transitions
440     OUTPUT Ts;"STAT:CALLP:NTR 2"! Latch "Register" LED turning off
450     OUTPUT Ts;"*CLS"! Clear Status Event Registers
460     OUTPUT Ts;"CALLP:REGISTER"
470     REPEAT
480         OUTPUT Ts;"*ESR?;;STAT:CALLP:EVENT?"
490         ENTER Ts;Esr,Register
500         WAIT .2 ! Gives the testset time to service other processes
510         UNTIL Register OR Esr ! Returns 0 until one of the bits is set
520         IF Esr THEN
530             PRINT "Error with Registration"
540             STOP
550         ELSE
560             PRINT "Mobile Registration Successful!"
570         END IF
580     SUBEND
590 Enable_pcs:     SUB Enable_pcs
600     COM Ts
610     OUTPUT Ts;"CALLP:DCCH:PCS:MODE `ON'"
620     SUBEND
630 Escape: SUB Escape
640     COM Ts
650     CLEAR 7
660     LOCAL Ts
670     PRINT "Query Error or other bus problem occurred."
680     STOP
690     SUBEND
700 Setup_dtc: SUB Setup_dtc !Setup an digital control channel.
```

```
710     COM Ts
720     OUTPUT Ts;"CALLP:CSYS `DCCH`"           !System Type
730     OUTPUT Ts;"CALLP:DCCH:CCH 1012"       !Set Cntrl Chan number as needed.
740     SUBEND
750 Setup_sms: SUB Setup_sms
760     COM Ts
770     OUTPUT Ts;"CALLP:DCCH:SMS:CONT `NewCo ISP has been announced!`"
780     SUBEND
790 Send_sms: SUB Send_sms
800     COM Ts
810     WAIT 3
820     OUTPUT Ts;"CALLP:DCCH:CORD `Send SMS`" !Send MWI command to mobile.
830     SUBEND
840 Test_response: SUB Test_response
850     COM Ts
860     DIM Response_1$[256]
870     OUTPUT Ts;"STAT:CALLP:PTR 1" !Enable pos-going transistion register
880     OUTPUT Ts;"STAT:CALLP:NTR 0" !for the Active indicator to tell when
890     OUTPUT Ts;"*CLS" !the test set has gone from Active, to Access, and
900     REPEAT           !back to Active, before reading the result.
910         OUTPUT Ts;"STAT:CALLP:EVENT?"
920         ENTER Ts;Active_again
930         UNTIL Active_again<>0
940     OUTPUT Ts;"CALLP:DCCH:RCDD1?" !Query the mobile's response.
950     ENTER Ts;Response_1$
960     PRINT Response_1$
970     SUBEND
```

## Caller ID

### Description

Caller ID sends caller information to the mobile when paged. Depending on the mobile's caller ID abilities, the data displayed can be the name and phone number of the calling person.

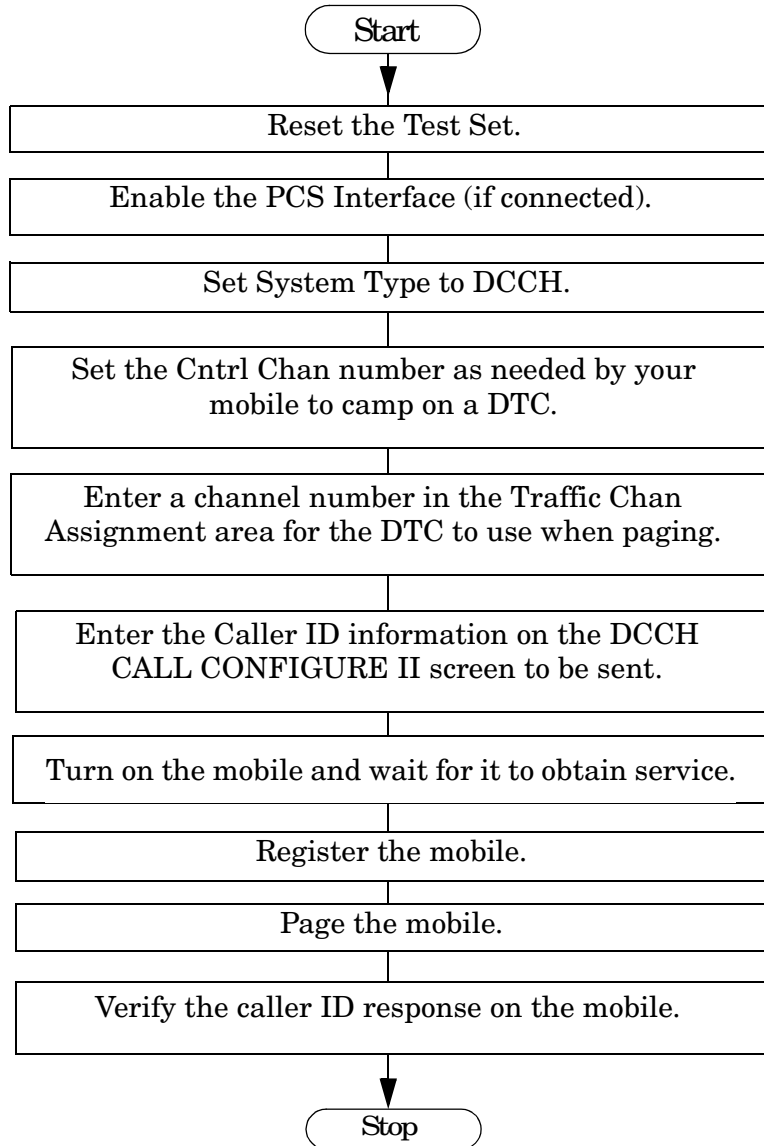
### Test Conditions

- System Type = DCCH
- Control Channel = Digital, Channel number as needed by your mobile for service.
- Traffic Channel Assignment = DTC, 777.

## Manual Operation

- Press **PRESET**.
- If a PCS Interface is used, set the `PCS Mode` field on the `CONFIGURE` screen to `On`.
- Display the `CALL CONTROL` screen.
- Set the `System Type` to `DCCH`.
- For PCS mobiles:
  - Set the `MS Capab` field (`DCCH CALL CONFIGURE II`) screen to `US PCS`.
  - Set the `Voc:` field (`CALL CONTROL` screen) to match the mobile's vocoder (typically `ACELP`).
- In the `Traffic Chan Assignment` area, set the `Chan` to `777`.
- Display the `DCCH CALL CONFIGURE II` screen.
  - Enter the phone number of the calling party in the `Calling Num` field.
  - Enter a name in the `Calling Name` field.
  - In the `Name Size` field, enter the number of characters from the `Calling Name` field to send to the mobile.
- Display the `CALL CONTROL` screen.
- Power on the mobile and wait until it indicates service.
- Enter the mobile's MIN or phone number in the `MS Id` field, OR select the `Register` field and wait for the mobile to register and automatically enter the phone number.
- Select the `Page` field.
- The mobile should connect and the caller ID information should be displayed on the mobile.

## Automated Test Flow Chart



## Example HP BASIC Program

```

10  ! This program implements AMPS Registration and Page
20  ! Monitors the 'Register' LED and 'Connect' LED
30  ! to determine when successful.
40  ! Includes error checking with ESR register.
50  ! Enters caller ID information to send when paging.
60  COM Ts
70  CLEAR SCREEN
80  Ts=714
90  Reset_ts
100 Enable_pcs
110 Setup_dcch
120 Set_to_active
130 Setup_trafchan
140 PRINT "Instructions: Turn the phone on now"
150 Register_mobile
160 Page_with_id
170 END

180 Set_to_active: SUB Set_to_active
190   COM Ts
200   OUTPUT Ts;"STAT:CALLP:PTR 1"! Arm Bit 0 of the PTR register
210   OUTPUT Ts;"*CLS"! Clear Status Event Registers
220   OUTPUT Ts;"CALLP:ACTIVE"
230   REPEAT
240     OUTPUT Ts;"STAT:CALLP:EVENT?"
250     ENTER Ts;Register
260     WAIT .2 ! Gives the testset time to service other processes
270     UNTIL Register ! Returns 0 until one of the bits is set
280   SUBEND

290 Reset_ts: SUB Reset_ts
300   COM Ts
310   OUTPUT Ts;"*RST;*OPC?"! Good reset technique
320   ENTER Ts;Done
330   OUTPUT Ts;"DISP ACNT"! Analog Call Control Screen
340   SUBEND

```

## Making Measurements

### Caller ID

```
350 Register_mobile: SUB Register_mobile
360     COM Ts
370     OUTPUT Ts;"STAT:CALLP:PTR 0"! Don't latch positive transitions
380     OUTPUT Ts;"STAT:CALLP:NTR 2"! Latch "Register" LED turning off
390     OUTPUT Ts;"*CLS"! Clear Status Event Registers
400     WAIT 5
410     OUTPUT Ts;"CALLP:REGISTER"
420     REPEAT
430         OUTPUT Ts;"*ESR?;:STAT:CALLP:EVENT?"
440         ENTER Ts;Esr,Register
450         WAIT .2 ! Gives the testset time to service other processes
460     UNTIL Register OR Esr ! Returns 0 until one of the bits is set
470     IF Esr THEN
480         PRINT "Error with Registration"
490         STOP
500     ELSE
510         OUTPUT Ts;"CALLP:PNUM?"
520         ENTER Ts;Phone_num$
530         PRINT "Registration Successful!"
540         PRINT "Phone number is ";Phone_num$
550     END IF
560 SUBEND
570 Page_with_id: SUB Page_with_id
580     COM Ts
590     PRINT "When the phone rings, press the SEND key."
600     OUTPUT Ts;"STAT:CALLP:PTR 32" ! Latch 'Connect' LED
610     OUTPUT Ts;"STAT:CALLP:NTR 0"
620     OUTPUT Ts;"*CLS"! Clear Status Event Registers
630     OUTPUT Ts;"CALLP:DCCH:CID:CNUM '5099224001'" !Calling Number
640     OUTPUT Ts;"CALLP:DCCH:CID:CNAM 'R. Heinlein'" !Calling Name
650     OUTPUT Ts;"CALLP:DCCH:CID:NSIZ 11" !Name Size
660     WAIT 5
670     OUTPUT Ts;"CALLP:PAGE"
680     REPEAT
690         OUTPUT Ts;"*ESR?;:STAT:CALLP:EVENT?"
700         ENTER Ts;Esr,Register
```



```

710     WAIT .2 ! Gives the testset time to service other processes
720     UNTIL Register OR Esr ! Returns 0 until one of the bits is set
730     IF Esr THEN
740         PRINT "Error with Page"
750         STOP
760     END IF
761     PRINT ""
770     PRINT "Page was Successful! Verify that the mobile shows"
771     PRINT "the correct Caller ID information."
780     SUBEND
790 Enable_pcs:     SUB Enable_pcs
800     COM Ts
810     OUTPUT Ts;"CALLP:DCCH:PCS:MODE `ON`"
820     OUTPUT Ts;"CALLP:DCCH:VOC `ACELP`"
830     OUTPUT Ts;"CALLP:DCCH:MSCapability:BAND `US PCS`"
840     SUBEND
850 Setup_dcch: SUB Setup_dcch
860     COM Ts
870     OUTPUT Ts;"CALLP:CSYS `DCCH`" !Set System Type to DCCH.
880     OUTPUT Ts;"CALLP:DCCH:CCH 1012" !Change Cntrl Chan number as needed.
890     SUBEND
900 Setup_trafchan: SUB Setup_trafchan
910     COM Ts
920     OUTPUT Ts;"CALLP:DCCH:DTCH:TChannel 777"
930     SUBEND

```



---

## 2 HP 8920B Programming Concepts

This chapter contains general information on writing programs for the HP 8920B. Detailed programming information is in the *HP 8920B Programmer's Guide* (p/n 08920-90222).

## Basic Input and Output Operations

### Overview

Sometimes the most difficult part of controlling the test set is just getting started with your first measurement. Before attempting to automate a measurement, it is generally recommended to first perform the set up and make measurements manually, then duplicate the manual procedure with HP-IB command strings and programming algorithms.

There are two fundamental processes for communicating with the HP 8920B over the HP-IB bus. The first process is sending data (like commands) to the instrument. In HP BASIC, the command to send data to the instrument is the OUTPUT statement. The second process for communicating with the HP 8920B is reading data back from the instrument. In HP BASIC, the command to read data from the instrument is the ENTER statement.

### Using the OUTPUT Statement to Send Commands

This two line program example sends a command to the HP 8920B:

```
10 OUTPUT 714;"*RST"  
20 END
```

- Line 10 sends a command to the instrument at address 714. The command is "\*RST" which instructs the instrument to reset.
- Line 20 is the END statement, which is always required in any HP BASIC program. This line has no effect on the instrument.

### General Process for Changing Settings

To perform the initial setup for changing settings on the HP 8920B, the general process is:

1. Use the OUTPUT statement to display the correct screen.
2. Use the OUTPUT statement for changing the settings on that screen.

For example:

```
10 OUTPUT 714;"DISP RFG"  
20 OUTPUT 714;"RFG:FREQ 825 MHZ"  
30 END
```

- Line 10 displays the RF Generator Screen.
- Line 20 sets the RF Generator frequency to 825 MHz.

This process is repeated until all necessary settings are changed.

## Using the ENTER Statement Read Back Values

When the instrument settings are made and the radio under test is configured, the next step is to read a measurement from the instrument. In HP BASIC the ENTER statement is used to read data from an instrument. The ENTER statement is always preceded by an OUTPUT statement that tells the instrument which measurement the program wants to read.

This short program uses the ENTER statement to return a value:

```
10 OUTPUT 714;"MEAS:RFR:POW?"
20 ENTER 714;Data
30 END
```

- Line 10, the OUTPUT statement is used to instruct the instrument to measure RF power. This line contains a question mark '?' and is called a query. In this case, the program is querying the RF Power measurement.
- Line 20 is the ENTER statement that will actually read the result back from the HP 8920B (entering the returned value into a variable called "Data"). The program will stay on line 20 until the test set responds with data. You must always follow a query with an ENTER statement on the next program line to read the data back from the instrument. You should include some type of time out statement in your program to handle the situation when the test set cannot make the measurement.

### General Process for Reading Back (Querying) Values

The basic concept of reading measurements from the HP 8920B is quite simple, however there are many factors that makes reading data one of the most difficult automated processes. When making measurements, you need to consider measurement settling, measurement triggering, and error handling if the measurement doesn't complete. An automated procedure for setting up and making measurements should include the following steps:

1. Configure the HP 8920B and the radio.
2. Display and Activate the measurement on the HP 8920B.
3. Wait until the test set and radio have 'settled'.
4. Trigger the measurement.
5. Output a query to the test set to tell it which result you want.
6. Enter the data from the test set into a variable.
7. If the data doesn't come back from the test set, send a device clear to the test set so that the query is not still pending.

If any of these steps are not done properly, you will receive "Query Error" messages on the HP 8920B and it is possible to lock-up the test set if errors are not handled correctly.

## A More Complete Example Program

The following program is a more complete example that includes everything except error handling. More details on triggering and error handling are included later in this document.

```
10  OUTPUT 714;"TRIG:MODE:RETR SINGLE"  
20  OUTPUT 714;"DISP RFG"  
30  OUTPUT 714;"RFG:FREQ 825 MHZ"  
40  OUTPUT 714;"RFG:AMPL -10 DBM"  
50  OUTPUT 714;"DISP RFAN"  
60  OUTPUT 714;"MEAS:RFR:POW:STATE ON"  
70  WAIT 2  
80  OUTPUT 714;"TRIG"  
90  OUTPUT 714;"MEAS:RFR:POW?"  
100 ENTER 714;Data  
110 PRINT Data  
120 END
```

- Line 10 set the instrument for single triggering.
- Line 20 displays the RF Generator screen to allow settings.
- Lines 30 and 40 set the RF Generator frequency and amplitude.
- Line 50 displays the RF Analyzer screen.
- Line 60 enables the RF power measurement. Once the measurement is enabled, it will remain active whenever a screen is displayed that contains the RF power measurement.
- Line 70 is a wait statement that allows settling for the HP 8920B and the radio under test.
- Line 80 triggers the measurement.
- Line 90 instructs the instrument to put the RF power result in the output queue to be read back by the controlling program.
- Line 100 enters the data from the HP 8920B output queue.
- Line 110 prints the result to the computer screen.

## Using Status Registers for Call Processing

### Overview

Cellular call processing refers to registrations, originations, pages, and handoffs for cellular mobiles. Because executing these functions will take an unknown amount of time, it is necessary for the control program to use special techniques for monitoring the state of the test set and taking special care to keep the control program synchronized with the test set. This is accomplished by monitoring the status registers which indicate the current state of the test set. Each bit of the status registers corresponds to a unique state or process in the instrument. For a very detailed explanation of the capabilities, refer to the *HP 8920B Programmer's Guide* (p/n 08920-90222).

The concept of writing programs that use status registers is quite simple, but since many users have never programmed the status registers it may seem a little difficult at first. The general procedure is to execute a call processing function (such as a PAGE), and then monitor one of the bits in the call processing status register group until the bit indicates that the function has completed. For instance, when executing a page, your control program can monitor the 'connected' bit to indicate that the page was successful and the control program can continue.

In these programming examples the call processing condition register is monitored. This register indicates the current instantaneous state of the call processing system. In some programming situations, it is desirable to monitor the call processing event register. The event register latches changes in the condition register.

The following program demonstrates this technique:

```

10     OUTPUT 714;"DISP ACNT"
20     OUTPUT 714;"*CLS"
30     OUTPUT 714;"CALLP:PAGE"
40     REPEAT
50         OUTPUT 714;"STAT:CALLP:COND?"
60         ENTER 714;Status_register
70         WAIT .2
80     UNTIL BIT(Status_register,5)
90     PRINT "Page was Successful!"
100    END

```

- Line 10 displays the Analog Call Control screen. This is the screen where call processing functions take place.
- Line 20 is a command to "Clear Status Registers". This is important because the program will monitor these registers to determine the instrument state.
- Line 30 commands the HP 8920B to PAGE the mobile.
- Lines 40 and 80 create a loop to monitor the call processing status condition register.

- Line 50 queries the HP 8020B for the call processing status condition register.
- Line 60 reads the value back from the test set and stores the data in a variable called Status\_register.
- Line 70 is a short wait (200 milliseconds) which allows the test set some time to process other tasks. This is important because the HP-IB queries have a high priority and if the loop doesn't have any delays, the test set is so busy reporting to the external computer that the other processes (like the page) may not complete.
- Line 80 examines bit 5 of the variable Status\_register. When bit 5 is set, it indicates the mobile is connected and only then should the control program continue on and make measurements.

### Adding Error Trapping

The previous short program to page the mobile is complete except for any error trapping. If the mobile doesn't connect, the program will stay in a continuous loop. There are two techniques that are commonly used for this situation.

The first technique involves monitoring the "Event Status Register", which is where error conditions are reported. The second technique involves putting a timer into the loop and if the call processing function doesn't complete in a specified time, the control program can exit the loop and continue with some type of error trapping routine.

The following example monitors the Event Status Register for errors and stops the program if an error occurs.

```
10   OUTPUT 714;"DISP ACNT"
20   OUTPUT 714;"*CLS"
30   OUTPUT 714;"CALLP:PAGE"
40   REPEAT
50     OUTPUT 714;"STAT:CALLP:COND?"
60     ENTER 714;Status_register
70     OUTPUT 714;"*ESR?"
80     ENTER 714;Error_register
90     IF Error_register<>0 THEN
100      PRINT "Error during page"
110      STOP
120     END IF
130     WAIT .2
140     UNTIL BIT(Status_register,5)
150     PRINT "Page was Successful!"
160 END
```



- Lines 70 and 80 are used to read the event status register.
- Lines 90 checks if the variable `Error_register` is not equal to zero, which would indicate an error.
- Lines 100-120 prints an error message and stops the program.

The following program is an example of the technique that uses a loop counter as a timer to detect the page failure:

```

10 ! re-save "sample1.pgm"
20 OUTPUT 714;"DISP ACNT"
30 OUTPUT 714;"*CLS"
40 OUTPUT 714;"CALLP:PAGE"
50 Loop_count=0
60 REPEAT
70 Loop_count=Loop_count+1
80 OUTPUT 714;"STAT:CALLP:COND?"
90 ENTER 714;Status_register
100 IF Loop_count=50 THEN
110 PRINT "Error during page"
120 STOP
130 END IF
140 WAIT .2
150 UNTIL BIT(Status_register,5)
160 PRINT "Page was Successful!"
170 END

```

The process to use status registers for performing registrations, pages, originations, and handoffs are all similar. The following example shows how to perform a registration. One small difference you may notice in this example is the monitoring loop is looking for the HP 8920B to leave the registration condition (indicating the registration is finished). In the example program for a page, the monitoring loop was waiting for the HP 8920B to enter the connected condition (indicating that the page state was finished).

```

10 ! re-save "sample2.pgm"
20 OUTPUT 714;"DISP ACNT"
30 OUTPUT 714;"*CLS"
40 OUTPUT 714;"CALLP:REGISTER"
50 WAIT 2
60 Loop_count=0
70 REPEAT
80 Loop_count=Loop_count+1

```

```
90      OUTPUT 714;"STAT:CALLP:COND?"
100     ENTER 714;Status_register
110     IF Loop_count=50 THEN
120         PRINT "Error during registration"
130         STOP
140     END IF
150     WAIT .2
160     UNTIL NOT BIT(Status_register,1)
170     PRINT "Registration was Successful!"
180 END
```

- Line 20 displays the Analog Call Control screen. This is the screen where call processing functions take place.
- Line 30 is a command to "Clear Status Registers". This is important because the program will monitor these registers to determine the instrument state.
- Line 40 commands the HP 8920B to REGISTER the mobile.
- Line 50 is a 2 second wait that allows the test set to enter the 'registration' state.
- Lines 60 to 160 create a loop to monitor the call processing status condition register.
- Line 80 is a loop counter to know when to exit because of a time out.
- Line 90 and 100 queries the HP 8920B for the call processing status condition register.
- Lines 110-140 checks the loop counter and stops the program if the count = 50.
- Line 150 is a short wait (200 milliseconds) which allows the test set some time to process other tasks.
- Line 160 monitors the 'registration bit' until the HP 8920B leaves the registration state. This is indicated by the bit being set to zero (false).

## Triggering Measurements

### Overview

There are two types of triggering modes for remote (automated) operation. When the HP 8920B is in remote mode, the trigger is set to either repetitive (continuous) or single. In repetitive triggering mode, all active measurements are continuously triggered. When the control program queries the HP 8920B for a measurement result, the HP 8920B triggers a new measurement and places the last completed measurement result in the output queue for the control program to read.

When using single trigger, the control program must send a 'TRIG' command to the HP 8920B. This flushes all the current measurement results and causes the HP 8920B to begin a new measurement. The new measurement will update the results for all the active measurements. After the measurement results are updated, the control program can query the HP 8920B for results. This causes the HP 8920B to place the requested results in the output queue where the control program can then retrieve the measurement results.

### Using Repetitive Triggering

The following program example uses repetitive triggering:

```

10  OUTPUT 714;"TRIG:MODE:RETR REPETITIVE"
20  OUTPUT 714;"DISP RFAN"
30  OUTPUT 714;"MEAS:RFR:POW?"
40  ENTER 714;Result
50  PRINT Result
60  END

```

- Line 10 sets the remote triggering mode to repetitive (continuous).
- Line 20 displays the RF Analyzer screen. This will automatically start triggering for all the active measurements on that screen.
- Line 30 queries the test set for the RF Power measurement. This causes the last result to be put into the output queue.
- Line 40 enters the data from the output queue into the variable called 'Result'.
- Line 50 prints the measurement value.

## Using Single Triggering

The following program example uses single triggering:

```
10  OUTPUT 714;"TRIG:MODE:RETR SINGLE"  
20  OUTPUT 714;"DISP RFAN"  
30  OUTPUT 714;"TRIG"  
40  OUTPUT 714;"MEAS:RFR:POW?"  
50  ENTER 714;Result  
60  PRINT Result  
70  END
```

- Line 10 sets the remote triggering mode to single.
- Line 20 displays the RF Analyzer screen. No measurements will appear.
- Line 30 triggers all the active measurements on the RF Analyzer screen.
- Line 40 queries the test set for the RF Power measurement. This causes the result from the previous trigger to be put into the output queue.
- Line 50 enters the data from the output queue into the variable called 'Result'.
- Line 60 prints the measurement value.

## Handling HP-IB Query Errors

### Overview

Under certain conditions, it may not be possible for the HP 8920B to make a measurement. If this happens, the control program must properly clear the HP-IB buffer before proceeding with any other program statements. A common mistake is when a measurement doesn't complete and the control program is stopped and re-run. Quite often the first command sent to the instrument is "\*RST" for an instrument reset. This is not the correct way to handle the query error and it can lock-up the test set under certain conditions. The correct technique would be to send a "device clear" to the instrument before any commands are sent. It is a good idea to have the very first statement in any HP-IB control program to be a device clear.

The device clear (or selected device clear) command is defined in IEEE 488 and it instructs the instrument to clear any pending HP-IB operations. The device clear statement is unique for each different interface card and programming language. As an example, in HP BASIC the command "CLEAR 714" sends a selected device clear to the instrument at address 714. In a language like C or Pascal, the command could be "IOCLEAR (714)" or "IOCLEAR (714L)". Refer to the documentation for your programming language and HP-IB or GP-IB interface card.

Here is a good way to start your program:

```
10 CLEAR 714
20 OUTPUT 714;"*RST"
```

By starting the program with a device clear, any pending HP-IB operations are cleared and there won't be any chance of locking up the HP 8920B. Typically the control program has some type of error trapping to clean up the HP-IB queue in case of measurement errors or measurements that don't complete. A simple example can illustrate how a programmer could implement this in HP BASIC.

```
10 Start_meas: !
20 ON TIMEOUT 7,15 GOTO Clean_up_hpib
30 OUTPUT 714;"TRIG:MODE:RETR SINGLE"
40 OUTPUT 714;"DISP RFAN"
50 OUTPUT 714;"TRIG"
60 OUTPUT 714;"MEAS:RFR:POW?"
70 ENTER 714;Result
80 PRINT Result
90 STOP
100 Clean_up_hpib:!
110 CLEAR 714
120 PRINT "Measurement was aborted"
```

```
130   GOTO Start_meas
140   END
```

Line 20 is an HP BASIC statement that sets up a time-out. This statement instructs HP BASIC to go to the line labeled "Clean\_up\_hpib" if any instrument on the HP-IB bus 7 doesn't respond for 15 seconds. (In this example, 7 is the interface select code). If the power measurement doesn't complete, the program will hang up on line 80 for 15 seconds while it is waiting for data back from the HP 8920B. After the 15 second "ON TIMEOUT" timer expires, the program jumps to line 100, then executes line 110 to clear the HP-IB operations. Line 120 prints an error message and line 130 causes the program to go to the beginning (Line 10) and starts over.

This is a simple technique that can be implemented in almost any programming language. It is a good programming practice that whenever data is to be sent to the instrument or read from the instrument, some type of error handling routine should be used. One implementation would be to write general purpose subroutines like "To\_testset" or "From\_testset" that would send data back and forth between the computer and the test set. These general purpose routines would be a good location in the code to include the proper error handling routines.

---

## Reducing Test Time

### Overview

Writing the fastest possible test software involves efficient programming, understanding the device-under-test, and optimizing set ups and measurements with the test equipment. This section of this document focuses the test set, and particularly on helping the programmer understand and avoid some of the slower (and often unnecessary) processing in the test set.

Some of the processes that can slow down your program when using the HP 8920B include:

- Changing screens when it isn't necessary.
- Auto-ranging and auto-tuning.
- Making unnecessary measurements.

### Changing Screens

Changing screens on the HP 8920B takes approximately 1 second. For making measurements it is generally necessary to be on the correct screen. However, many settings (such as the RF Generator) can be made from almost any screen. For analog measurements, try to use the DUPLEX screen because it contains Generator and Analyzer functions. Avoid the Analog RX and TX screens because they auto-configure many settings in the test set, slowing operation.

### Auto-ranging and Auto-tuning

Auto-ranging and auto-tuning for the analyzer are two processes that should definitely be avoided. Auto-ranging is the process where the test set analyzer automatically sets the correct gain and attenuation setting for a measurement. Auto-tuning is where the RF analyzer will automatically find, and tune to, the largest RF signal. If you know the frequency and level of the signal-under-test, set the HP 8920B tuning mode to 'manual' and set the input attenuators to 'hold'. Write your program to directly control the analyzer frequency and input attenuation. To find the correct attenuation, you may want to manually allow the HP 8920B to auto-range on a particular signal, then in your automated application you can set the gain correctly under program control.

## Unnecessary Measurements

Making unnecessary measurements takes additional time, and should always be avoided. However, many programmers don't realize that their application software is often causing the test set to make unnecessary measurements. There are two situations that cause unnecessary measurements. The first situation is when the displayed screen has more measurements activated than necessary. For instance, the RF Analyzer screen may have Frequency Error, TX Power, FM Deviation, and AF Frequency all active. Whenever a trigger command is issued, the test set automatically makes all the active measurements. You can save a significant amount of time by disabling the un-used measurements.

The following command turns off the FM Deviation measurement:

```
OUTPUT 714;"MEAS:AFR:FM:STATE OFF"
```

A second situation that often generates unnecessary measurements is during repetitive triggering. When making multiple measurements with a single setting, use single triggering, and read back the results from all the measurements. This technique does not cause the HP 8920B to re-trigger measurements each time a new query is sent to the test set.

The following examples uses repetitive triggering to make two measurements: FM deviation and RF power. In this example, line 30 triggers all the active measurements, and lines 40 to 70 reads back results.

```
10    ! re-save "fast1.pgm"
20    OUTPUT 714;"TRIG:MODE:RETR REPETITIVE"
30    OUTPUT 714;"TRIG"
40    OUTPUT 714;"MEAS:RFR:POW?"
50    ENTER 714;Pow_result
60    OUTPUT 714;"MEAS:AFR:FM?"
70    ENTER 714;Fm_result
80    PRINT Pow_result,Fm_result
90    END
```

The following example makes the same measurements, but uses single triggering:

```
10    ! re-save "fast2.pgm"
20    OUTPUT 714;"TRIG:MODE:RETR SINGLE"
30    OUTPUT 714;"TRIG"
40    OUTPUT 714;"MEAS:RFR:POW?;:MEAS:AFR:FM?"
50    ENTER 714;Pow_result,Fm_result
60    PRINT Pow_result,Fm_result
70    END
```

This program saves some HP-IB traffic and reads back multiple measurements by combining two queries and two Enters on the same line. (This technique may be more difficult to implement in languages other than HP BASIC).



---

## 3 IS-137 Test Descriptions

This chapter contains brief descriptions of the IS-137 tests that are normally done in production using the HP 8920B Option 801. Tests and minimum standards are identified by title and by paragraph number in the standards. An exception is the call processing tests: the HP 8920B Option 801 does them, but they are not described here.

Tests can be performed manually, using your own programs, or by using the HP 11807E Option 024 AMPS/NAMPS/DAMPS/DCCH/PCS Mobile Test Software.

---

## 2.3.2.1 Receiver Signal Level Range Capability (RF Sensitivity)

Error rate under fading and static (no fading) conditions. BER (Bit Error Rate) is used for the DTC (Digital Traffic Channel) and WER (Word Error Rate) is used for the BCCH (Broadcast Control Channel). Sensitivity to very low level and very high level (overload) signals are measured.

### Procedure Summary

Synchronize the mobile to the test set on a Digital Traffic Channel (DTC) by putting the mobile in loop-back mode with the TDMAON command. Set the test set generator level to  $-110$  dBm (for BER on the DTC) and  $-111$  dBm (for WER on the BCCH). For the DTC send pseudo-random data bits to the mobile and measure BER on the transponded bits. For the BCCH send SCF and CRC data in the RACH L3 data field and measure WER on the looped-back RACH burst. Repeat the test, using an amplitude of  $-25$  dBm (overload condition).

### HP 8920B Option 801 Method

Same as specified in standard under static conditions (unable to perform fading tests). The test must be performed with the mobile in loopback mode; it cannot be performed in the connect state. Measurements are made on the DIGITAL MEASUREMENTS screen with the Dig Meas field set to BER, DTC WER, or DCCH WER.

#### 2.3.2.1.1.3 Minimum Standard

- BER:  $\leq 3\%$  at all test levels.
- WER:  $\leq 9\%$  at all test levels.

## 2.3.2.5 Mobile Assisted Handoff / Mobile Assisted Channel Allocation Bit Error Rate

The mobile estimates bit error rate of the received signal on the DTC.

### Procedure Summary

Set up a call between the test set and the mobile. Induce various bit error rates into the data field bits of the test signal and instruct the mobile to report the bit error rates it measures.

### HP 8920B Option 801 Method

Use the CALL CONTROL screen and get the mobile up on a call (connect state) using a Page or Originate; it cannot be performed in test mode. Set the Display field to Meas, then change the measurement to MAHO. The phone's estimate of RSSI for the neighbor channels and the RSSI and BER of the current traffic channel is displayed.

The DCCH CALL CONFIGURE screen allows you to change the Neighbor Channel List using the # Neighbors field, and to introduce Bit errors using the % BIT ERROR field.

The test set stays on one DTC, but it tells the phone to monitor several channels and report RSSI. The channels do not have a signal on them so the phone is actually measuring the noise level. The test set also tells the phone to report BER and RSSI on the DTC.

### 2.3.2.5.3 Minimum Standard

For a known level of induced BER, the mobile shall report a BER that is within a specific range listed in the following table.

**Table 3-1. MAHO/MACA Bit Error Rate**

TX Induced BER (%)	RX Report BER Interval (%)
0	< 0.01
0.013 to 0.08	0.01 to < 0.1
0.133 to 0.4	0.1 to < 0.5
0.667 to 0.8	0.5 to < 1.0
1.333 to 1.6	1.0 to < 2.0
2.667 to 3.2	2.0 to < 4.0
5.333 to 6.4	4.0 to < 8.0
10.667	> 8.0

## 3.1.2.2 Digital Frequency Stability

Ability of the transmitter to maintain an assigned carrier frequency.

### Procedure Summary

Put the transmitter on a digital traffic channel at an amplitude of  $-60$  dBm. Modulate it with pseudo-random data bits. Measure frequency offset over one burst (between symbols 6 and 162). Frequency offset is determined with respect to a frequency value 45 MHz lower than the test base station signal, as measured at the mobile's transmitter output (80.04 MHz lower for 1900 MHz equipment).

Stability should also be checked with the base station frequency  $\pm 300$  Hz (for 800 MHz operation) or  $\pm 200$  Hz (for 1900 MHz operation) from the standard channel assignment (see paragraph 3.1.2.2.2 in IS-137).

### HP 8920B Option 801 Method

Absolute frequency error is measured. It is derived from the accumulated phase error as part of the EVM (Error Vector Magnitude) measurement.

- Mobile in the **Connect** state: Use the CALL CONTROL screen and get the phone up on a call on a digital traffic channel. Select either the EVM1 or the EVM10 measurement. Frequency error is displayed along with EVM
- Mobile in the **Test Mode**: Use the DIGITAL MEASUREMENT screen and put the phone in test mode (TDMAON). Select either the EVM1 or the EVM10 measurement. Frequency error is displayed along with EVM.

### 3.1.1.2.3 Minimum Standard

The frequency offset during any burst must be less than  $\pm 200$  Hz. Stability must be maintained over a temperature range of  $-30^{\circ}\text{C}$  to  $60^{\circ}\text{C}$ , or over a smaller temperature range as long as the transmitter is automatically prohibited from operating outside the smaller temperature range. In all cases, frequency stability must be maintained over the entire temperature and frequency range that the transmitter is operating at, even when the supply voltage is varied  $\pm 15\%$  from its nominal value.

---

## 3.2.1.2 & 3.2.2 Digital RF Power Output

Mean power during a burst into a nominal load impedance.

### Procedure Summary

Put transmitter on a traffic channel. Modulate it with pseudo-random data field bits. Measure mean burst power over at least 140 consecutive symbols between symbol 6 and symbol 162.

### HP 8920B Option 801 Method

Same as described in IS-137. The 140 symbols in the middle of the burst are measured.

- Mobile in the **Connect** state: Use the CALL CONTROL screen and get the phone up on a call on a digital traffic channel. Set the Display field to Meas. Select the EVM 1 measurement to read the TX Power (Avg).
- Mobile in the **Test Mode**: Use the DIGITAL MEASUREMENT screen and put the phone in test mode (TDMAON). Set the Dig Meas field to Avg Power to read the TX Power (Avg) in Watts or dBm. Relative TX Power (in dB) can also be measured when the Dig Meas field is set to EVM1 or EVM10, but requires a calibrated TDMA source to provide a reference signal (see *Power Measurements* in the *HP 83206A User's Guide*).

### 3.2.1.2.3 Minimum Standard for 800 MHz Equipment

The transmitter must be capable of transmitting at eight distinct power levels for Power Class I, II, or III, and eleven distinct power levels for class IV. Refer to Table 3.2.1-1 in the TIA/EIA standard for information on acceptable Effective Radiated Power (ERP) levels for the different mobile station power levels and classes.

### 3.2.2 Minimum Standard for 1900 MHz Equipment

The transmitter must be capable of transmitting at the ERP levels specified in Table 3.2.2-1 in the TIA/EIA standard.

### 3.3.2.1 Digital Modulation Type and Accuracy

RMS Error Vector Magnitude (EVM) over one time slot (157 symbols).

#### Procedure Summary

Put the mobile on a traffic channel. Modulate a test source with pseudo-random data field bits. Have the mobile transpond the bits using the TDMAON command. Measure EVM with a standard EVM instrument.

#### HP 8920B Option 801 Method

Same as described in IS-137.

- Mobile in the **Connect** state: Use the CALL CONTROL screen and get the phone up on a call on a digital traffic channel. Set the Display field to Meas. Select the EVM 1 measurement to read the EVM (%) over 1 burst; select EVM 10 to measure EVM over 10 bursts. Measure origin offset by changing the Peak EVM measurement to Orgin Ofs.
- Mobile in the **Test Mode**: Use the DIGITAL MEASUREMENT screen and put the phone in test mode (TDMAON). Set the Dig Meas field to EVM 1 to read the EVM (%) over 1 burst; select EVM 10 to measure EVM over 10 bursts. Measure origin offset by changing the Peak EVM measurement to Orgin Ofs.

#### 3.3.2.1.3 Minimum Standard

The RMS vector error in any burst must be less than 12.5%. Also, the normalized EVM during the first 10 symbols of a burst after the ramp-up must be less than 25% RMS when averaged over 10 bursts within a 1 minute interval. Also, the origin offset in any burst must be less than -20 dBc.

---

### 3.4.1.2.1 Digital Adjacent and Alternate Channel Power Due to Modulation

Mean transmitted power (resulting from modulation and noise) which falls into the adjacent ( $\pm 30$  kHz), first alternate ( $\pm 60$  kHz), or second alternate ( $\pm 90$  kHz) channels.

#### Procedure Summary

Put the transmitter on a digital traffic channel. Modulate it with pseudo-random data field bits. Transmit filler code on the SACCH. Set DVCC to binary 1. Set a reference by measuring mean power in the traffic channel. Measure relative mean power in the adjacent and alternate channels over at least 50% of the symbols in a time slot. Gate the measuring receiver so that only the part of the spectrum resulting from modulation is measured.

#### HP 8920B Option 801 Method

Same as described in IS-137.

- Mobile in the **Connect** state: Use the CALL CONTROL screen and get the phone up on a call on a digital traffic channel. Set the Display field to Meas. Select the Ad Ch Pwr measurement.
- Mobile in the **Test Mode**: Use the DIGITAL MEASUREMENT screen and put the phone in test mode (TDMAON). Set the Dig Meas field to Ad Ch Pwr.

#### 3.4.1.2.1.3 Minimum Standard

Adjacent channel power, centered  $\pm 30$  kHz from the center frequency, must not exceed a level of 26 dB below the mean output power. First alternate channel power, centered  $\pm 60$  kHz from the center frequency, must not exceed a level of 45 dB below the mean output power. Second alternate channel power, centered  $\pm 90$  kHz from the center frequency, must not exceed a level of 45 dB below the mean output power or  $-13$  dBm, whichever is the lower power.

## 3.6 Time Alignment

The mobile adjusts its TDMA transmit timing to prevent bursts from other mobiles on the same RF channel from colliding at the base station.

### Procedure Summary

The HP 8920B Option 801 performs this test using a software routine contained in the HP 11807E Option 024 software package.



## Tests Supported Using the HP 8920B Option 801 and HP 11807E Option 024 Software

The following tables list the IS-137 tests, whether they can be performed using the HP 8920B Option 801 hardware, and if they are included in the HP 11807E Option 024 software (which can only be run on an HP 8920B Option 801 system).

**Table 3-2.**

TEST	TIA/EIA Test Title	HP 8920B Opt. 801	In HP 11807E Opt. 024	Notes
2.	<b>Receiver Minimum Standards</b>			
2.1	<b>Frequency Requirements</b>			
2.1.1	Frequency coverage, the entire channel plan in Tables 1.5-1 (cellular band) and 1.5-2 (PCS)	Yes	Yes	HP 8920B also covers downband 806 to 824 MHz with TIA/EIA-136 format.
2.1.2	Synchronization Acquisition Time (Digital Mode)	No	No	Requires 2 sources and a fader with the second generator.
2.2	<b>Demodulation Requirements</b>			
2.2.1	<b>Type of Modulation</b>			
2.2.1.1	Analog (Demodulation, FM, Simultaneous Voice and SAT of $\pm 14$ kHz)	Yes	Definition	Definition only, no measurement defined.
2.2.1.2	Digital (Demodulation, $\pi/4$ DQPSK 0.35 roll-off factor @24.3 kSymbols/sec.	Yes	Definition	Definition only, no measurement defined.
2.2.2	<b>Demodulated Analog Voice Signals</b>			
2.2.2.1	Electrical Audio Frequency Response	Yes	RXA Audio Frequency Response	

**Table 3-2.**

TEST	TIA/EIA Test Title	HP 8920B Opt. 801	In HP 11807E Opt. 024	Notes
2.2.2.2	Audio Muting	Yes	No	Requires control to mute the audio in the phone.  See Para. 3.3.1.2.4 Analog Voice - Path muting.
2.2.2.3	Analog Voice Expander	Yes	RXA Expander	No attack/delay time in software.
2.2.2.4	Analog Voice Hum and Noise	Yes	RXA Hum and Noise	
2.2.2.5	Analog Voice Audio Harmonic Distortion	Yes	RXA Audio Distortion	
2.2.2.6	Receive Audio Sensitivity	Partial	No	Acoustic test Vs. voltage input. The HP 8920B can be a stimulus, but requires acoustical coupler (calibrated ear). Sound pressure measurements are not supported on the HP 8920B.
2.2.2.7	Receive Audio Frequency Response	No	No	Acoustic test Vs. frequency. The HP 8920B can be a stimulus, but requires acoustical coupler (calibrated ear). Sound pressure measurements are not supported by the HP 8920B.
2.2.3	<b>Demodulated Data and Control Signals</b>			
2.2.3.1	Manchester Decoding Definition	See notes	See Notes for Paragraph 2.3.1.5	Definition. Test for bit error rate is in Paragraph 2.3.1.5. It requires a Fader (HP 11759B) and coder/decoder.

**Table 3-2.**

TEST	TIA/EIA Test Title	HP 8920B Opt. 801	In HP 11807E Opt. 024	Notes
2.2.3.2	Sat Decoding	Partial, SAT tone generated.	No	Section 3.3.1.4 contains SAT tone measurement. HP 8920B generates SAT tones.
2.2.4	<b>Demodulated Digital Voice Signals</b>			
2.2.4.1	Receive Audio Sensitivity	Partial	No	Requires a reference encoder and an acoustic measurement. Sound pressure test is not supported on the HP 8920B.
2.2.4.2	D/A Converter and Reconstruction Filter	No	No	Measurement of receiver internal test points is not supported.
2.2.4.3	Audio Frequency Response	No	No	Requires a reference encoder and an acoustic measurement. Sound pressure test is not supported on the HP 8920B.
2.3	<b>Receiver Performance</b>			
2.3.1	<b>Analog</b>			
2.3.1.1	RF Sensitivity	Yes	RXA RF Sensitivity	12 dB SINAD RF level.
2.3.1.2	Adjacent and Alternate Channel Desensitization	See Notes	No	Requires 2 Signal Generators (HP 8920B) plus manual testing.
2.3.1.3	Intermodulation Spurious Response Attenuation	See Notes	No	Requires 3 Signal Generators (HP 8920B) plus manual testing.

**Table 3-2.**

TEST	TIA/EIA Test Title	HP 8920B Opt. 801	In HP 11807E Opt. 024	Notes
2.3.1.4	Protection Against Spurious Response Interference	See Notes	No	Requires 2 Signal Generators (or 1, HP 8920B with 2nd Sig Gen with 10 to 2600 MHz range).
2.3.1.5	Bit-Error Rate	See Notes	RXA FVC Order Message Rate	Requires Fader (HP 11759B) and Coder/Decoder. The SW sends order messages and counts the correct messages received by the Mobile. This is an alternative to BER test.
2.3.2	<b>Digital</b>			
2.3.2.1	<b>Receiver Signal Level Range Capability</b>			
2.3.2.1.1	Static and Faded (Loopback BER and WER)	Partial Yes for static BER Yes with fader for dynamic test See Notes	Partial Yes for Raw Loopback BER test No on faded See Notes	DTC Data Field (BER). Faded, 100 and 8 requires Fader. Static, -110 and -25 dBm Yes in loopback. BCCH (WER) Faded, 100, 8 requires Fader. Static, -111 and -25 Yes with FW B.05.07. Requires the phone to be in the proper TDMAON command for BER or WER. Faded tests require signal Fader (HP 11759B).

**Table 3-2.**

TEST	TIA/EIA Test Title	HP 8920B Opt. 801	In HP 11807E Opt. 024	Notes
2.3.2.2	Adjacent and Alternate channel Desensitization	See Notes	No	Requires 2 $\pi/4$ digital Signal Generators (HP 8920B) and Mobile Receiver in TDMAON mode.
2.3.2.3	Intermodulation Spurious Response Attenuation	See Notes	No	Requires 3 Sources, 2 $\pi/4$ digital (HP 8920B) and 1 CW with Mobile Receiver in TDMAON mode.
2.3.2.4	Blocking and Spurious-Response Rejection	See Notes	No	Requires 2 $\pi/4$ Signal Generators (1, HP 8920B and the 2nd SG with 10 to 6000 MHz range) and Mobile Receiver in TDMAON mode.
2.3.2.5	Mobile Assisted Handoff/Mobile Assisted Channel Allocation Bit Error Rate	Yes, see Note	Partial Yes, see Note	The HP 8920B provides protocol to get to active call status. Mobile returns RSSI, BER, % and neighbor reports. Amplitude can be at low levels (<-110 dBm) to measure BER%. After B.05.07, HP 8920B will generate known random bit errors at high levels (-60 dBm) per spec.
2.3.2.6	Co-channel Performance	Yes, with Fader See Notes	No	Requires 2 $\pi/4$ Signal Generators (HP 8920B) and 1 Fader plus FAACH words appended with CRC.

**Table 3-2.**

TEST	TIA/EIA Test Title	HP 8920B Opt. 801	In HP 11807E Opt. 024	Notes
2.3.2.7	Delay Interval	Yes with Fader See Note	No	Requires 2 generators with Fading and Mobile Receiver in TDMAON mode.
2.4	Conducted Spurious Emission	No See Note	No	Requires frequency selective voltmeter from 10 to 2600 MHz for 800 MHz mobile receiver, and 10 to 6000 MHz for 1900 MHz mobile receiver.
2.5	Radiated Spurious Emission	No	No	Environmental testing, with Spectrum Analyzer/screen room.
2.6	<b>Received Signal Strength Indicator (RSSI)</b>			
2.6.1	Analog	Partial	No	RF source is capable of 60 dB of dynamic range input to the receiver. The RSSI indication is a function of the mobile.
2.6.2	Digital	Partial, yes with 2nd $\pi/4$ digital source	Partial, RXD Receiver Sensitivity (BER/RSSI) for one channel	HP 8920B measures mobile-reported RSSI on 1 channel. Requires 2 $\pi/4$ digital Test Sets, one to maintain a link, the 2nd varies the RF level from -118 to -51 dBm.

**Table 3-2.**

TEST	TIA/EIA Test Title	HP 8920B Opt. 801	In HP 11807E Opt. 024	Notes
3.	<b>Transmitter Minimum Standards</b>			
3.1	<b>Frequency Requirements</b>			
3.1.1	<b>Analog</b>			
3.1.1.2	Frequency Stability	Yes	TXA Frequency Accuracy	±2.5 ppm of any assigned channel frequency.
3.1.1.3	Carrier Switching Time (Attack, Release)	No	No	
3.1.1.4	Channel Switching Time	No	No	Requires Triggering Oscilloscope.
3.1.2	<b>Digital</b>			
3.1.2.2	Frequency Stability	Yes	TXD Frequency Accuracy	±300 Hz for 800 MHz, ±200 Hz for 1900 MHz operation
3.1.2.3	Carrier Switching Time (Attack, Release)	No	No	Spectrum Analyzer zero span test.
3.2	<b>RF Power Output Requirements</b>			
3.2.1	<b>RF Power Output 800 MHz Equipment</b>			
3.2.1.1	Analog RF Power Output	Yes	TXA RF Power Output	8 levels, 0 to 7
3.2.1.2	Digital RF Power Output	Yes	TXD RF Power Output	11 levels, 0 to 10 from +28 to -4 dBm ±9 dB
3.2.2	RF Power Output 1900 MHz Equipment	Yes	TXD RF Power Output	11 levels, 0 to 10 from +28 to -8 dBm ±6 dB

**Table 3-2.**

TEST	TIA/EIA Test Title	HP 8920B Opt. 801	In HP 11807E Opt. 024	Notes
3.2.3	<b>RF Power Transition Time</b>			
3.2.3.1	Analog	No	No	Spectrum Analyzer with peak carrier detector.
3.2.3.2	Digital	No	No	Spectrum Analyzer (HP 859X with TDMA downloadable personality).
3.2.4	Carrier-On State (Analog and Digital)	No	No	Spectrum Analyzer with range between -60 dBm and the required output (mobile PL).
3.2.5	Protection Against False Transmission	No	No	Mobile protection circuit.
3.3	<b>Modulation Requirements</b>			
3.3.1	<b>Analog</b>			
3.3.1.1	Modulation Type and Modulation Stability	Yes	3 separate tests: 1. TXA Wideband Data Deviation 2. TXA Signaling Tone freq. and deviation 3. TXA SAT frequency error and deviation	Done for all 3 SAT tones.
3.3.1.2.1	Compressor	Partial Yes, see Notes	TXA compressor response	No attack time test in software.
3.3.1.2.2	Transmit Electrical Audio Response	Yes	TXA audio Frequency Response	



**Table 3-2.**

TEST	TIA/EIA Test Title	HP 8920B Opt. 801	In HP 11807E Opt. 024	Notes
3.3.1.2.3	Modulation Deviation Limiting	Yes	TXA Modulation Deviation Limiting on Analog Voice Channel	
3.3.1.2.4	Audio Voice-Path Muting	Yes See Notes	No	Requires control to mute the audio in the phone.
3.3.1.2.5	Transmit Audio Frequency response	No	No	Sound pressure measurements are not supported by the HP 8920B.
3.3.1.2.6	Transmit Audio Sensitivity	No	No	Sound pressure measurements are not supported by the HP 8920B.
3.3.1.3	Wideband Data	Yes	TXA Wideband Deviation	
3.3.1.4	Supervisory Audio Tone (SAT)	Yes	TXA Supervisory Audio Tone Frequency Error and Deviation	
3.3.1.5	Signaling Tone	Yes	TXA Signaling Tone Frequency and Deviation	
3.3.1.6	FM Hum and Noise	Yes	TXA FM Hum and Noise	
3.3.1.7	Residual Amplitude Modulation	Yes		
3.3.1.8	Modulation Distortion and Noise	Yes	TXA audio distortion	
3.3.2	<b>Digital Modulation</b>			
3.3.2.1	Modulation Type and Accuracy	Yes	TXD Modulation Accuracy	

**Table 3-2.**

TEST	TIA/EIA Test Title	HP 8920B Opt. 801	In HP 11807E Opt. 024	Notes
3.3.2.2	<b>Modulated Digital Voice Signals</b>			
3.3.2.2.1	Input Filter and A/D Converter	No	No	Internal measurements on the Mobile Receiver.
3.3.2.2.2	Transmit Audio Frequency Response	No	No	Ratio of reference decoder output/TX acoustic input Vs. frequency.
3.3.2.2.3	Transmitter Audio Sensitivity	No	No	Acoustic input to microphone Vs. electrical output of reference base station.
3.3.3	Loudness Contrast	No	No	TOLR and ROLR ratings don't vary >3 dB between analog and digital modes.
3.4	<b>Limitation on Emissions</b>			
3.4.1	<b>Spectrum Noise Suppression - Broadband</b>			
3.4.1.1	Analog	No	No	Requires Spectrum Analyzer.
3.4.1.2	<b>Digital</b>			
3.4.1.2.1	Adjacent and Alternate Channel Power due to Modulation	Yes	TXD Adjacent Channel	Use HP 8920B ACP on active call or use a Spectrum Analyzer (HP 859X).
3.4.1.2.2	Out of Band Power Arising from Switching Transients	No	No	Requires Spectrum Analyzer (HP 859X) with TDMA downloadable personality.

**Table 3-2.**

TEST	TIA/EIA Test Title	HP 8920B Opt. 801	In HP 11807E Opt. 024	Notes
3.4.2	<b>Harmonic and Spurious Emissions (Conducted) - Discrete</b>			
3.4.2.1	Analog	No	No	Requires Spectrum Analyzer with 30 kHz bandwidth and frequency range from minimum RF signal to the tenth harmonic of carriers in 800 MHz band, (869 to 894 MHz), to 10 GHz.
3.4.2.2	Digital	No	No	Requires Spectrum Analyzer with 30 kHz bandwidth and frequency range from minimum RF signal to the tenth harmonic of carriers in 800 & 1900 MHz bands (1930 to 1990 MHz), to 20 GHz.
3.4.3	<b>Harmonic and Spurious Emissions (Radiated) - Discrete</b>			
3.4.3.1	Analog	No	No	Requires Spectrum Analyzer with 30 kHz bandwidth.
3.4.3.2	Digital	No	No	Requires Spectrum Analyzer with 30 kHz bandwidth.
3.5	<b>Acoustic Echo Path Loss - Analog and Digital</b>	No	No	Acoustic measurement.
3.6	<b>Time Alignment</b>	See Notes	TXD Time Alignment	Software only, HP 11807E Option 024 Time alignment test.

**Table 3-2.**

<b>TEST</b>	<b>TIA/EIA Test Title</b>	<b>HP 8920B Opt. 801</b>	<b>In HP 11807E Opt. 024</b>	<b>Notes</b>
10.1.3.1	<b>DTMF</b>	Yes	TXA DTMF Key Pad and DTMF Frequency Error	

---

**A**

AF Analyzer Settings for Call Processing, [44](#)  
Analog Measurement, Call Control Screen, [44](#)  
Analog Measurements Screen, [50](#)  
Analog Measurements, Analog Measurements Screen, [50](#)  
Analog Mobile Origination, [28](#)  
Analog Page, [32](#)  
Analog Registration, [22](#)  
Analog TX Frequency Error, [44](#)  
Analog TX Power, TX Power, Analog, [44](#)  
Analog, Release, [38](#)  
Audio Frequency measurement, [44](#)  
Auto-ranging, [111](#)  
Auto-Tuning, [111](#)

**B**

BER Measurements, [68](#)

**C**

cabling, [21](#)  
calibration (temp. compensation), PCS Interface, [20](#)  
CALL CONFIG II screen, accessing, [19](#)  
CALL CONFIGURE screen, accessing, [19](#)  
CALL CONTROL screen, accessing, [19](#)  
Call Control Screen, Analog Measurements, [44](#)  
Call Processing Screens, Accessing, [19](#)  
Caller ID Operation, [92](#)  
Cellular Adapter, Description, [18](#)  
CONFIGURE screen, accessing, [19](#)  
connecting the mobile, [21](#)

---

**D**

Digital Call Processing, [56](#)

**E**

ESN, retrieving during registration, [22](#)

**F**

FM Deviation measurement, [44](#)

**H**

Hardware connections, [21](#)  
High Level Power Measurements, [18](#)  
HP 83206A Cellular Adapter Description, [18](#)  
HP 83236B PCS Interface, Description, [18](#)  
HP 8920B Opt. 801 Tests, [121](#)  
HP-IB Query Errors, [109](#)

**I**

IS-136,137 Description, [18](#)  
IS-54,55, [18](#)

**M**

MAHO BER, [74](#)  
MAHO Measurements, [68](#)  
Measurements  
  AF Frequency, [44](#)  
  Analog TX Frequency Error, [44](#)  
  Analog TX Power, [44](#)  
  BER & WER, [68](#)  
  Droop, [62](#)  
  Error Vector Magnitude, [62](#)  
  FM Deviation, [44](#)  
  Magnitude Error, [62](#)  
  MAHO, [68](#), [74](#)  
  Origin Offset, [62](#)  
  Phase Error, [62](#)  
  TDMA Frequency Error, [62](#)  
  TDMA RSSI, [74](#)  
  Triggering, [107](#)  
  Using HP 8920B Opt. 801, [121](#)  
  Using Opt. 024 Software, [121](#)  
Message Waiting Indicator, [80](#)  
MIN, retrieving during registration, [22](#)  
Mobile Test Software, [113](#)

### N

Neighbor RSSI, [74](#)

### O

Option 024 Software Tests, [121](#)  
Origination, Analog Mobile, [28](#)

### P

Page, Analog, [32](#)  
PCS Interface  
  enabling, [20](#)  
  operating considerations, [20](#)  
  temperature compensation, [20](#)  
PCS Interface, Description, [18](#)  
Power, Measuring High Levels, [18](#)  
Programming  
  Error Trapping, [104](#)  
  Input and Output Operations, [100](#)  
  Query Errors, [109](#)  
  Reducing Test Time, [111](#)  
  Status Registers, [103](#)  
  Triggering Measurements, [107](#)  
  Using ENTER to read values, [101](#)  
Programming Concepts, [99](#)



---

### Q

Querying values in programs, [101](#)

### R

Registration, analog, [22](#)

Release, Analog, [38](#)

### S

Short Message Service Operation, [86](#)

Software, Option 024, [113](#)

Speeding Up Tests, [111](#)

---

**T**

TDMA Call Processing, [56](#)  
TDMA Receiver RSSI Measurement, [74](#)  
TDMA Receiver Sensitivity, [68](#)  
TDMA Transmitter Measurements, [62](#)  
temperature compensation (PCS Interface), [20](#)  
test connections, [21](#)  
Test Descriptions, [113](#)  
TIA/EIA Test Description  
    2.3.2.1 Receiver Signal Level Range Capability, [114](#)  
    2.3.2.5 MAHO/MACA BER, [115](#)  
    3.1.2.2 Digital Freq Stability, [116](#)  
    3.2.1.2/3.2.2 Digital RF Power Output, [117](#)  
    3.3.2.1 Digital Modulation Type/Accuracy, [118](#)  
    3.4.1.2.1 Digital Adj. and Alt . Chan Power w/Mod, [119](#)  
    3.6 Time Alignment, [120](#)  
TX Frequency, Analog, [44](#)

**W**

WER Measurements, [68](#)